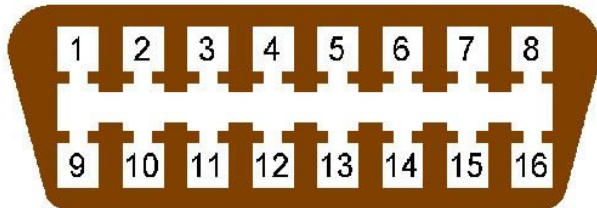
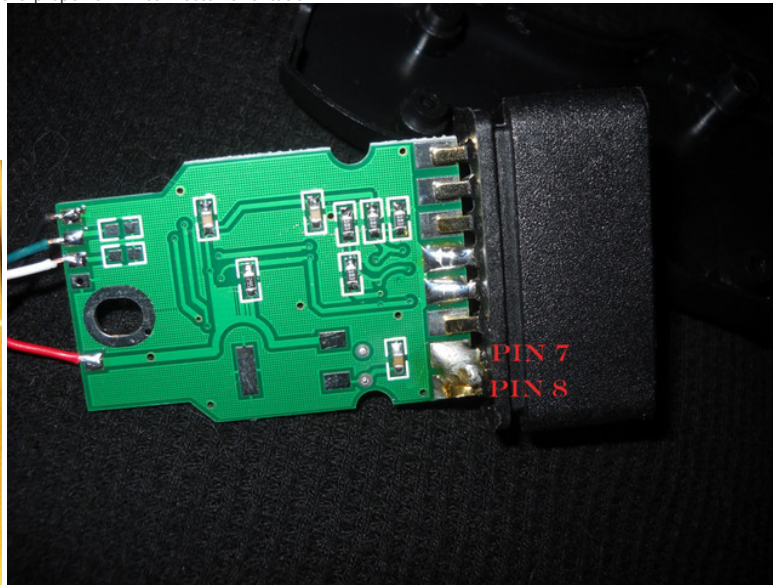


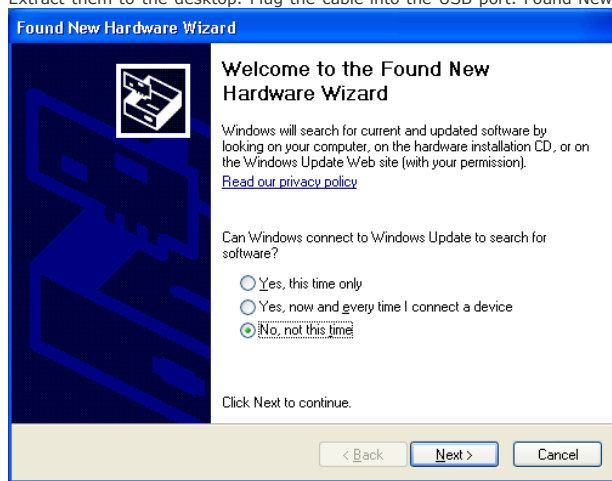
<



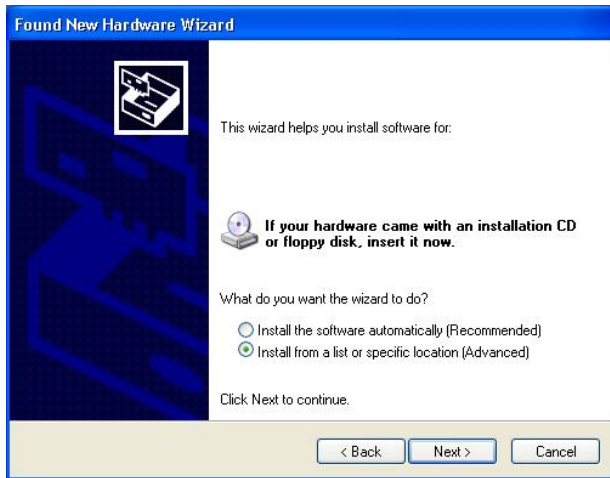
When you receive the cable, some pins will need to be modified (soldered together) to bridge the K connections so it can talk to our E46. Pins 7 and 8 need to be bridged. Open the OBD2 end of the cable by removing 2-4 screws. Heat up the soldering gun and dab a little solder to connect the two pins, as seen in the photos. The pinout diagram will show the proper OBD2 connector orientation.



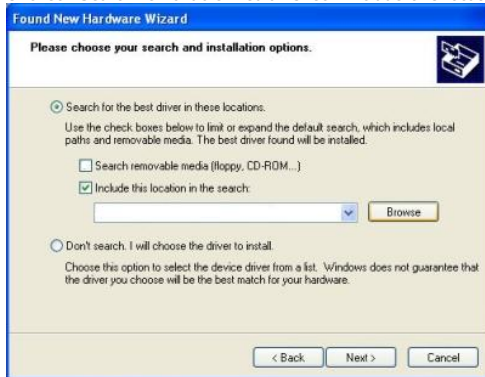
Here are the drivers needed to get XP to talk to the cable. [CDM 4.2.1916 WHQL certified](#)  
Extract them to the desktop. Plug the cable into the USB port. Found New Hardware Wizard should pop up. Click Not at this time. Click Next.



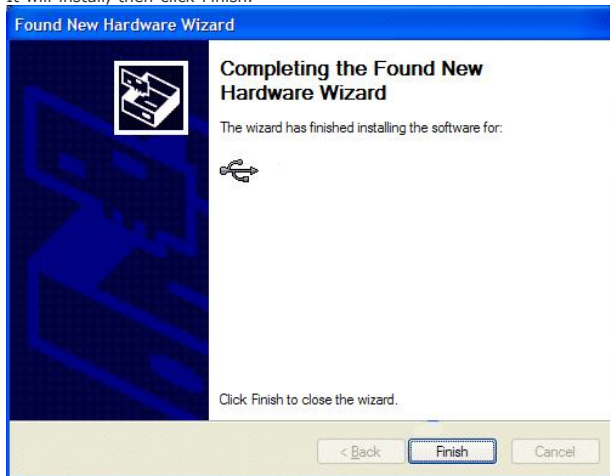
Click Install from a list or specific location, and Next.



Uncheck Search removable media. Check Include this location in the search. Click Browse and locate the folder of the extracted driver files. Click Next.

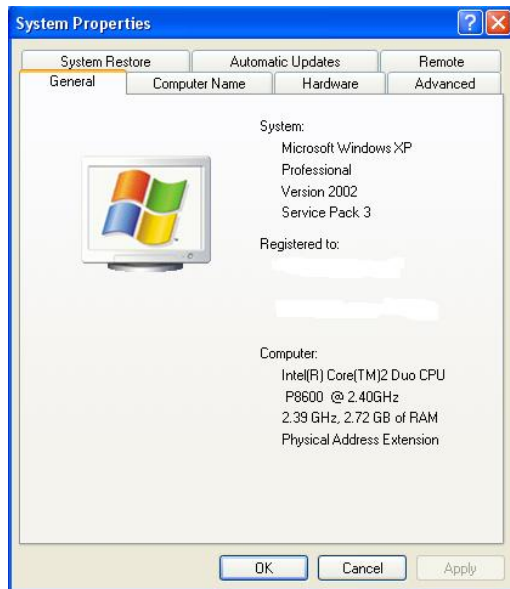


It will install, then click Finish.



**The Found New Hardware Wizard will pop up again. Repeat the same process above.**

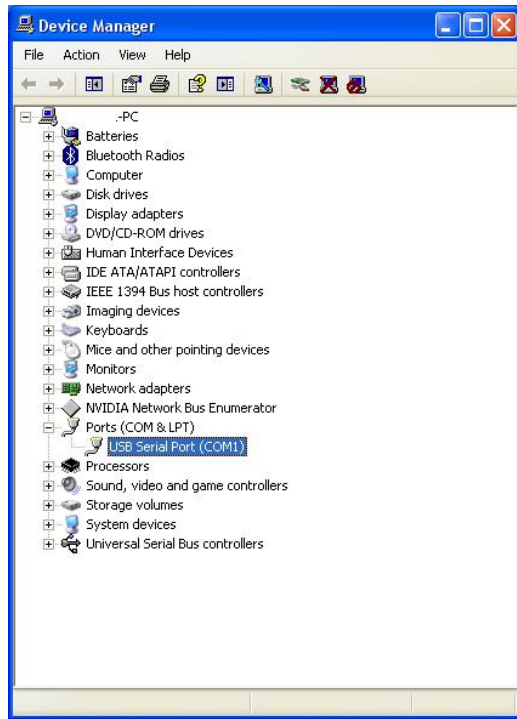
Now we need to modify the driver settings. Go to Start -> Control Panel -> System  
Click the Hardware tab



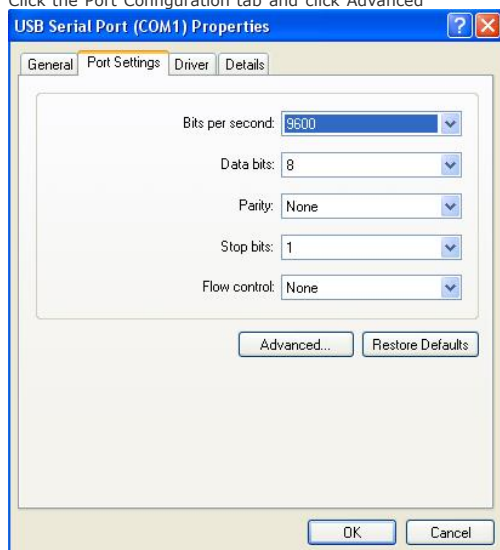
Click Device Manager



Within Ports (COM & LPT), there should be an entry for USB Serial Port (COM#). Double click it.

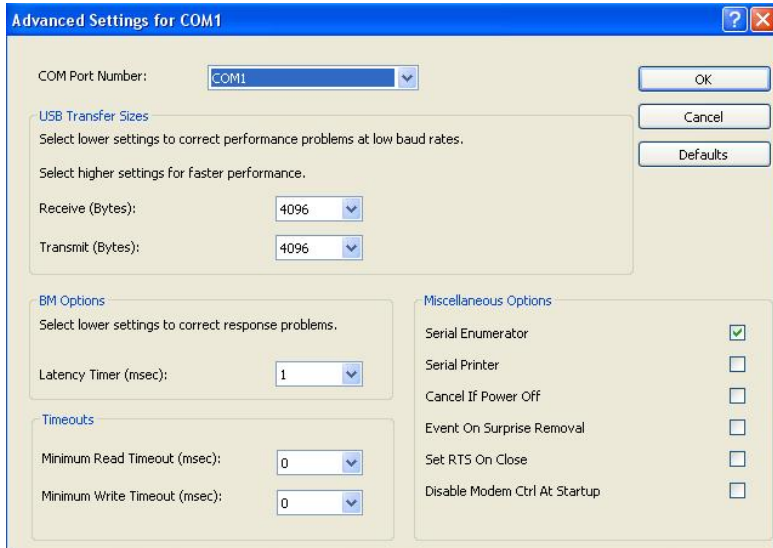


Click the Port Configuration tab and click Advanced

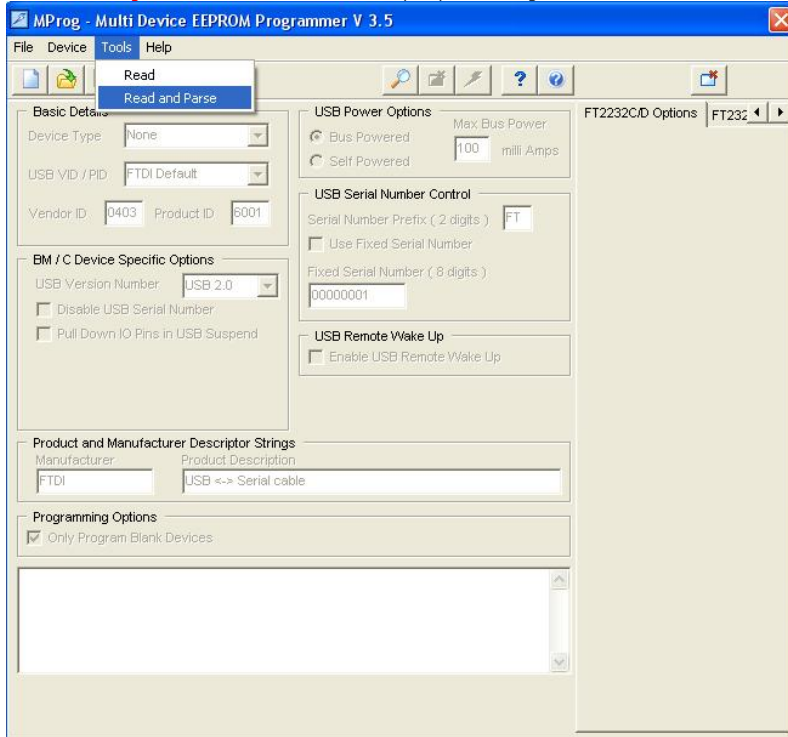


Change the COM# to COM1, and change the Latency to 1ms. Click OK in every box to get back to the desktop.

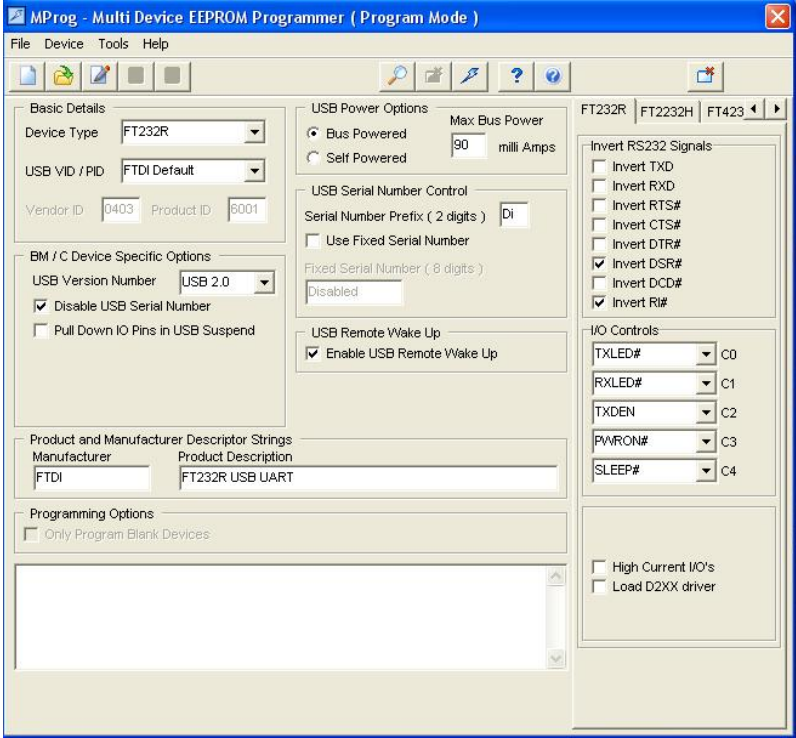




Now we need to modify the EEPROM on the FT232RL chip to communicate properly with our car. Download **MProg 3.5** and extract it to the desktop. Open it and go to Tools -> Read and Parse. The cable should pop up.



Next, check Invert DSR#, check Invert RI#. Click the Save icon and save it somewhere. Click the Flash icon (lightning bolt) and you should see a successful programming in the bottom field.



Info taken from <http://forums.bimmerforums.com/forum....php?t=1505990>  
Last edited by spencers; 03-23-2011 at 10:23 AM.



Reply | Reply With Quote

03-22-2011 12:57 PM

#2



**spencers** ◊  
Enforcer

Join Date: Dec 1969  
Location: Texas  
My Ride: 2001 325Ci ZSP  
Posts: 706

**EDIABAS/INPA**

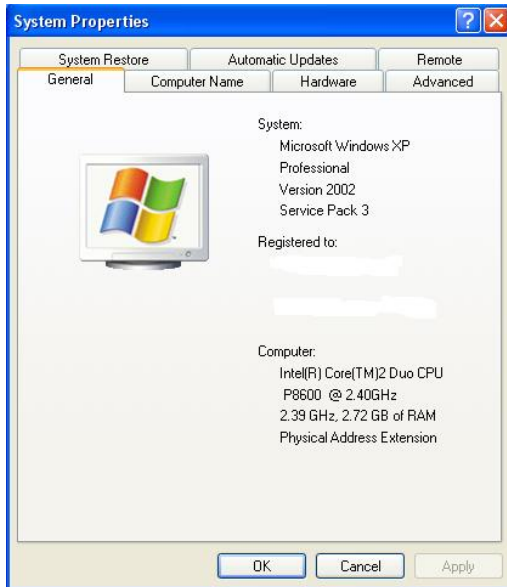
This is the main software that is used to get initial connectivity with the VAGCOM cable. Again, I will not delve into what you can do with the software itself, but simply how to get it installed and operating so **DO SO AT YOUR OWN RISK!**  
**You cannot go any further with DIS or SSS without EDIABAS correctly configured, working, and talking with your E46.**

You'll need:

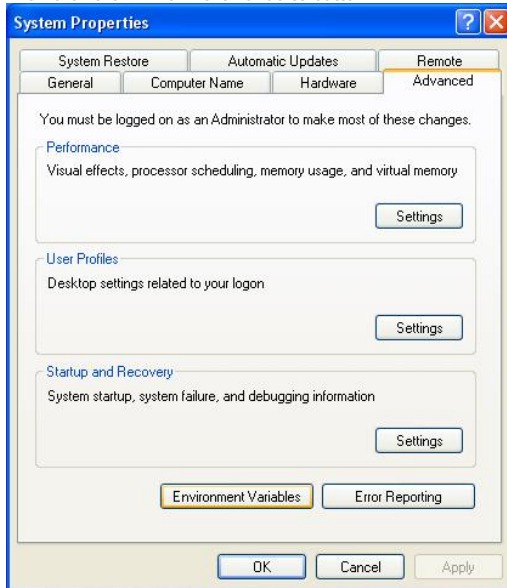
- [ediabas-6.4.3-full.nrg](#) Password: zhpmafia
- [Daemon Tools Lite](#)
- Working VAGCOM cable from ([Post 1](#))

For the entirety of this tutorial, you should have your antivirus and firewall disabled.

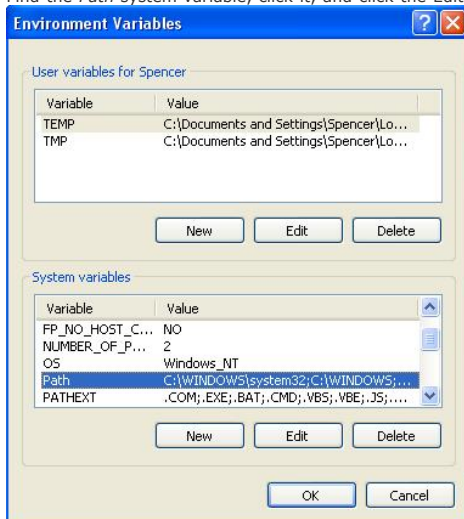
First and foremost, go to Start -> Control Panel -> System. Click the Advanced tab.



Then click the Environment Variables button



Find the Path system variable, click it, and click the Edit button



At the end of the Variable value, add a semicolon, and add "C:\EDIABAS\Bin"

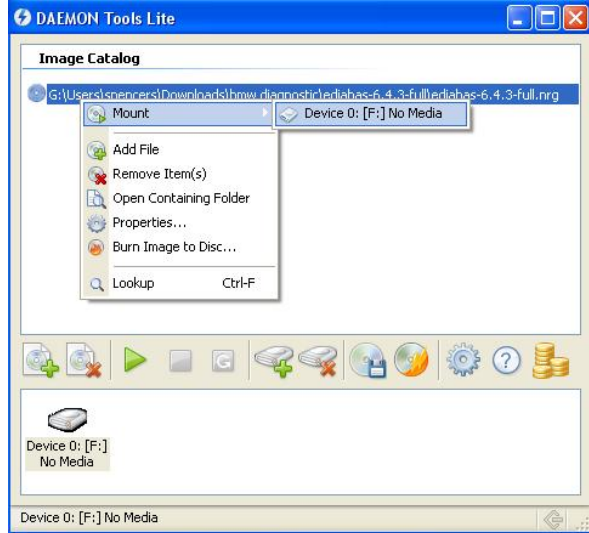


Press all the OK buttons until you're back to the desktop.

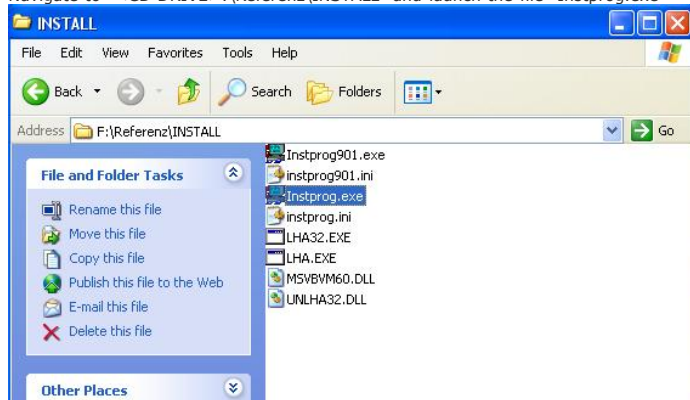


Now to begin the install. I assume you have already installed Daemon Tools Lite.

Drag the ediabas-6.4.3-full.nrg file to Daemon Tools, then right click it within Daemon Tools and mount the image.



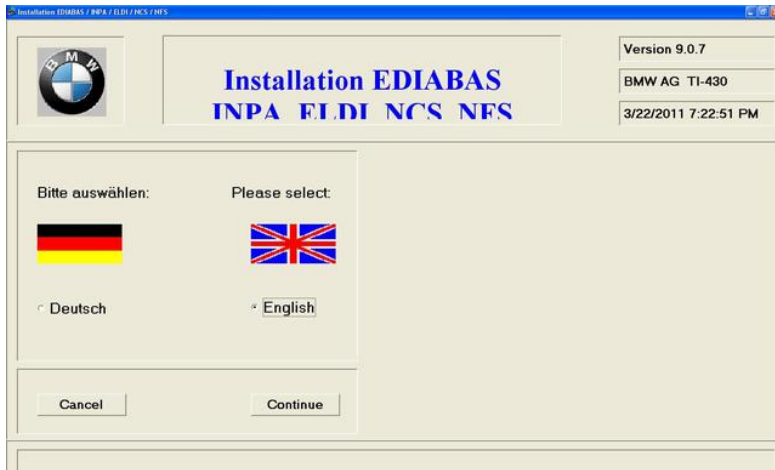
Navigate to "<CD DRIVE>:\Referenz\INSTALL" and launch the file "Instprog.exe"



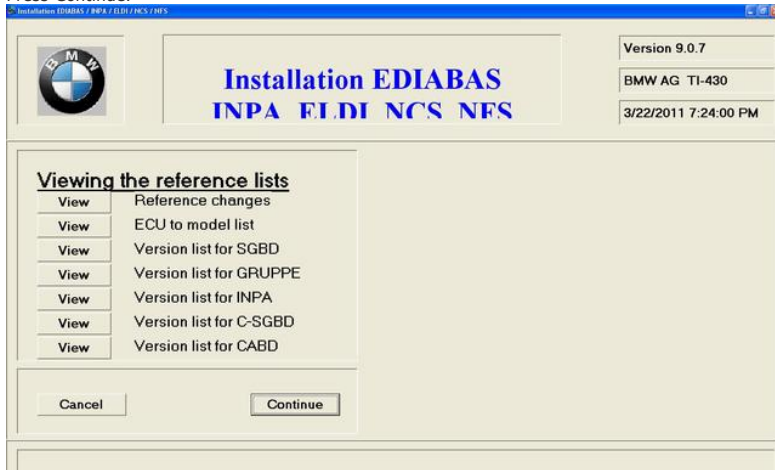
Click ok to any dialog boxes that come up



Select English. Press Continue.



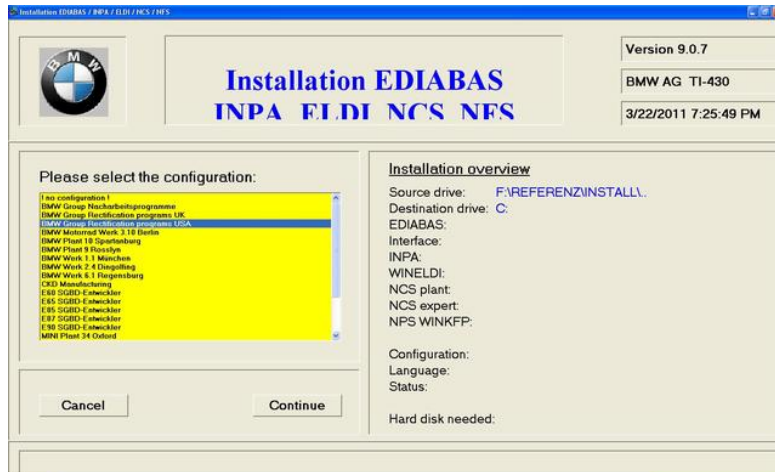
Press Continue.



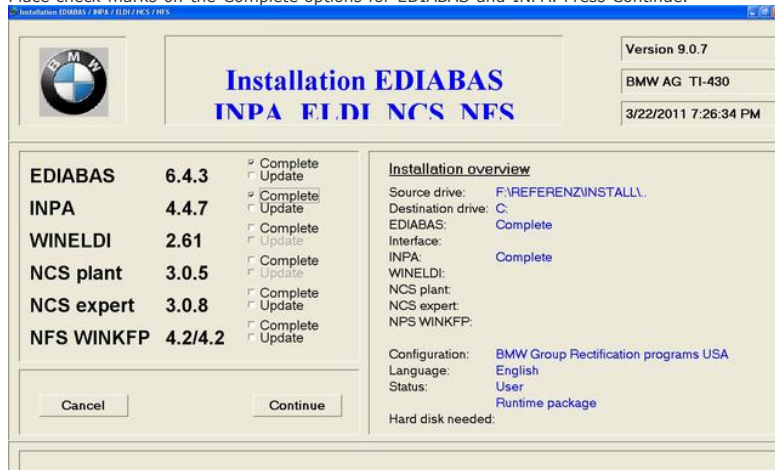
Leave C:\ as the destination drive and press Continue.



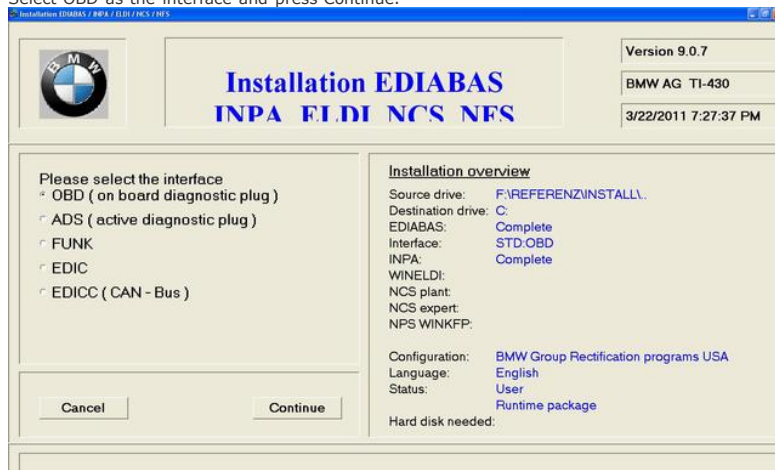
Select BMW Group Rectification programs USA and press Continue.



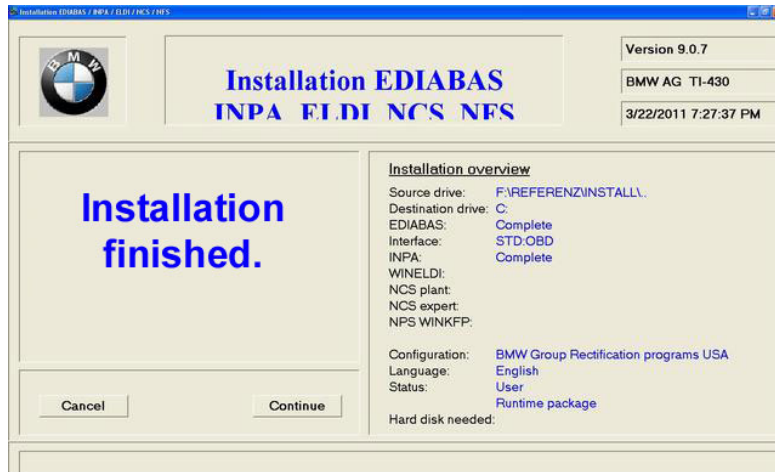
Place check marks on the Complete options for EDIABAS and INPA. Press Continue.



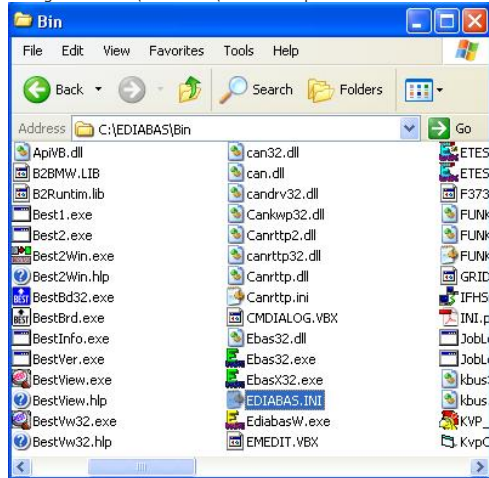
Select OBD as the interface and press Continue.



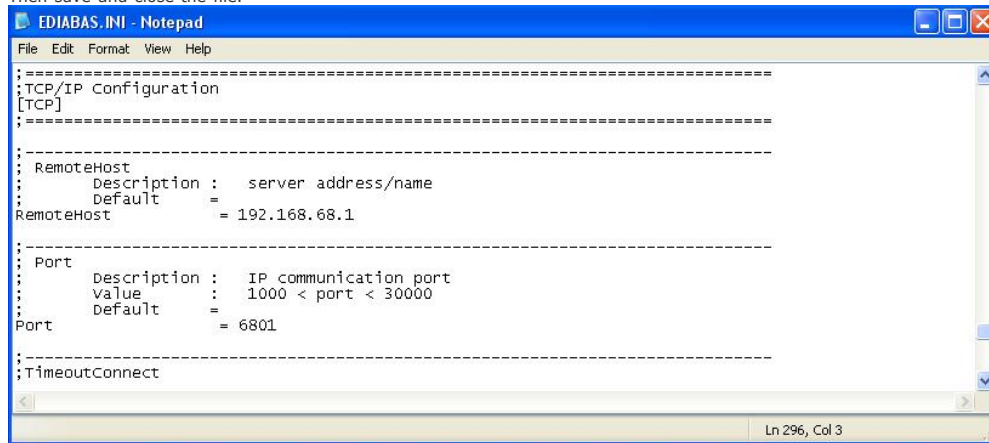
Press End when the installation has completed. The program may freeze for a few seconds, so don't be alarmed.  
If you get any errors before clicking End, it's because you didn't properly add the Environment Variable as listed above.



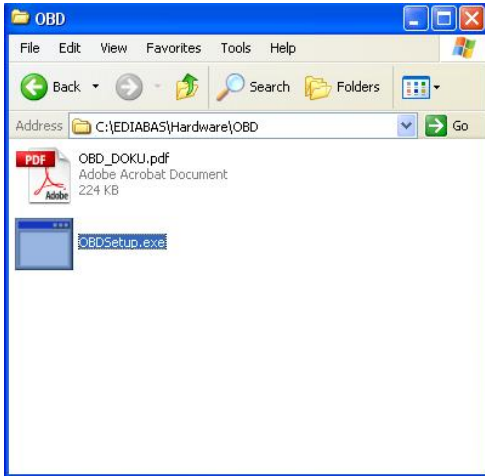
Now let's set up EDIABAS to talk to the cable.  
 Navigate to "C:\EDIABAS\Bin" and open EDIABAS.ini with Notepad.



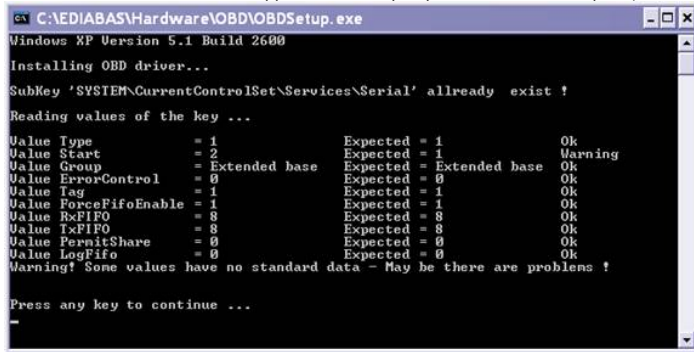
Locate the line for "RemoteHost" and "Port" and adjust the value to "192.168.68.1" and "6801"  
 Then save and close the file.



Navigate to "C:\EDIABAS\Hardware\OBD" and launch the file "OBDSUp.exe"

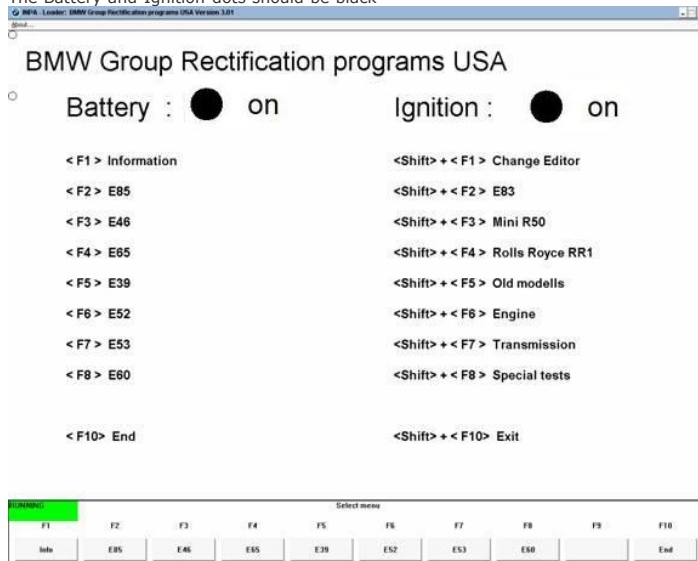


A screen similar to this should appear. Press any key to close it. At this point, it is best to restart the computer.



Be sure your firewall and antivirus are disabled when your computer comes back up. Verify that your cable is still set to COM1 within the Device Manager (**Post 1**)

Go out to the E46. Plug the cable into the OBD2 port and turn the key to position 2 (position right before the car starts). Start INPA using the shortcut in the start menu called "INPA(\_IPO)". The Battery and Ignition dots should be black

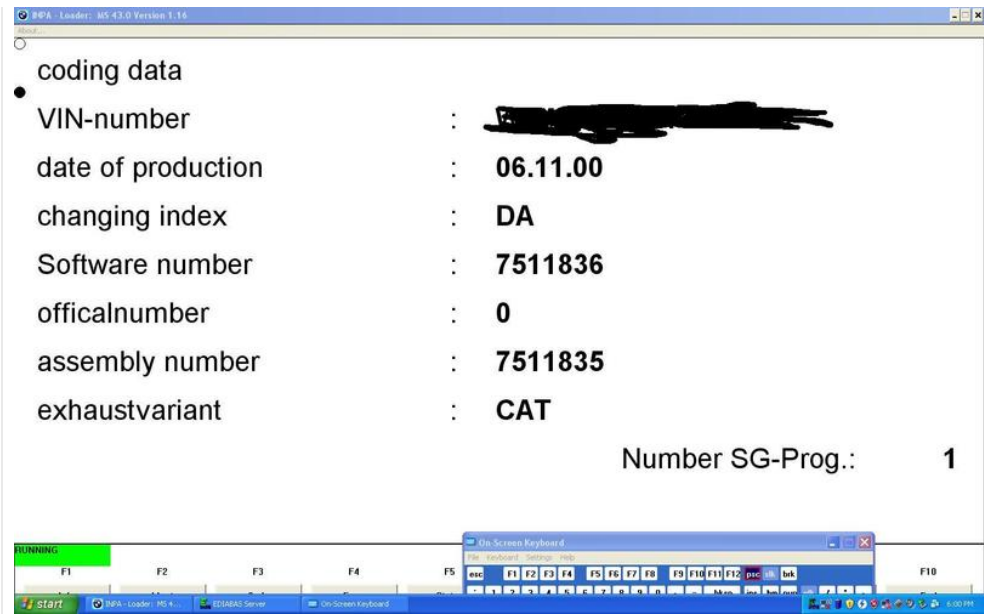


Press F3 for E46, click Engine, and find your DME.

ZHP is MS45 (if I recall)

ZSP is MS43.

If successful, you should get an info screen up with infos about your car.



Further tinkering around with the software is done **AT YOUR OWN RISK.**

Info taken from: <http://forums.bimmerforums.com/forum....php?t=1312104>  
As well as a PDF by unknown author called How to Install INPA 5.02 and Ediabas 6.4.7.pdf  
Last edited by spencers; 03-23-2011 at 12:39 PM.



Reply | Reply With Quote

03-22-2011 12:58 PM

#3



**spencers**  
Enforcer

Join Date: Dec 1969  
Location: Texas  
My Ride: 2001 325Ci ZSP  
Posts: 706

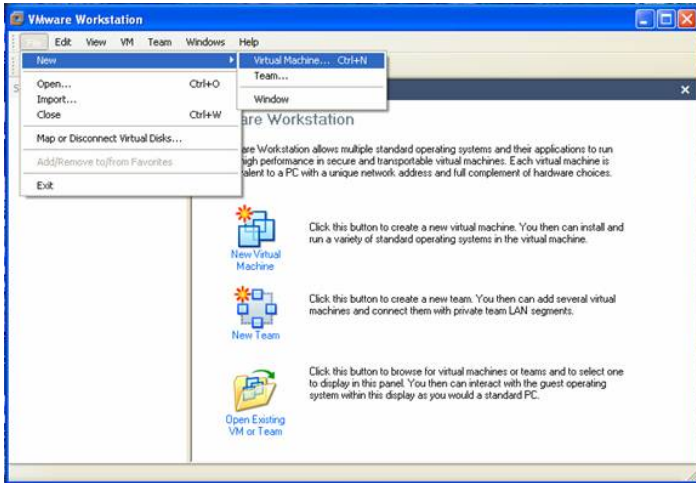
**DIS/GT1**

Ready for a tougher install? I assume you already have your computer set up with the OBD2 cable and fully working with the EDIABAS protocol and INPA communicating with your car. **This is imperative before continuing!** What you'll need:

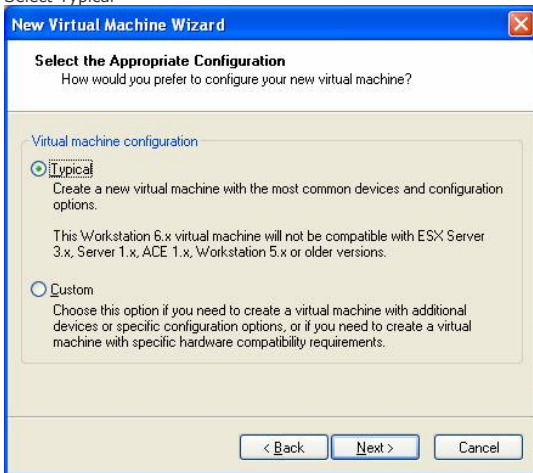
- [EasyDIS-base-44-v1.0.nrg](#) Password: zhpmafia
- [GT1\\_v44\\_programs.iso](#) Password: zhpmafia
- [VMWare Workstation](#) Password: zhpmafia
- [Daemon Tools Lite](#)
- Working VAGCOM cable from ([Post 1](#))
- Working EDIABAS/INPA install from ([Post 2](#))

Install VMWare Workstation as normal. Open VMWare and create a new virtual machine.

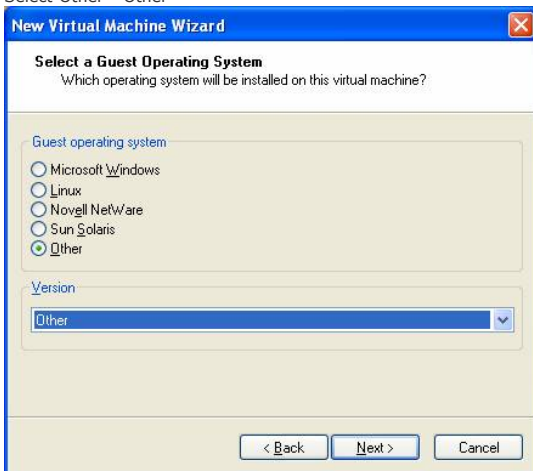




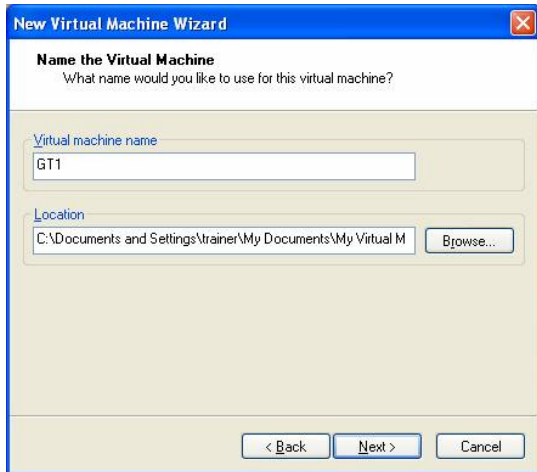
Select Typical



Select Other - Other



Name the VM "GT1"



**New Virtual Machine Wizard**

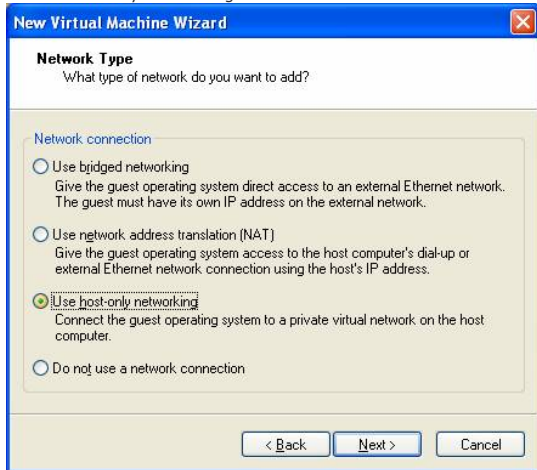
**Name the Virtual Machine**  
What name would you like to use for this virtual machine?

Virtual machine name  
GT1

Location  
C:\Documents and Settings\trainer\My Documents\My Virtual M Browse...

< Back Next > Cancel

Select Host Only networking



**New Virtual Machine Wizard**

**Network Type**  
What type of network do you want to add?

Network connection

☐ Use bridged networking  
Give the guest operating system direct access to an external Ethernet network. The guest must have its own IP address on the external network.

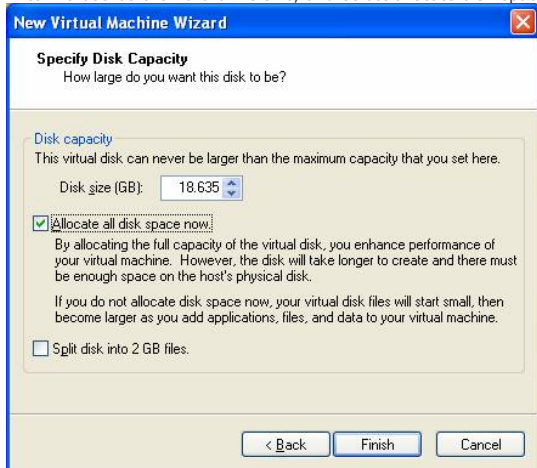
☐ Use network address translation (NAT)  
Give the guest operating system access to the host computer's dial-up or external Ethernet network connection using the host's IP address.

☒ Use host-only networking  
Connect the guest operating system to a private virtual network on the host computer.

☐ Do not use a network connection

< Back Next > Cancel

Enter 18.635 as the hard drive size, and select allocate disk space now



**New Virtual Machine Wizard**

**Specify Disk Capacity**  
How large do you want this disk to be?

Disk capacity  
This virtual disk can never be larger than the maximum capacity that you set here.

Disk size (GB): 18.635

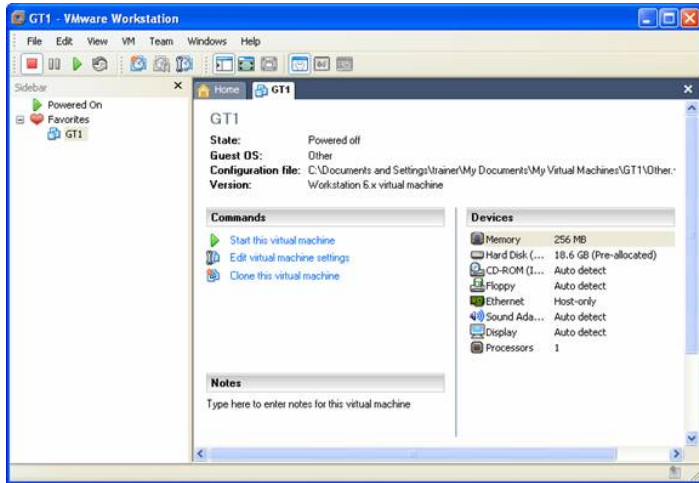
☒ Allocate all disk space now  
By allocating the full capacity of the virtual disk, you enhance performance of your virtual machine. However, the disk will take longer to create and there must be enough space on the host's physical disk.

If you do not allocate disk space now, your virtual disk files will start small, then become larger as you add applications, files, and data to your virtual machine.

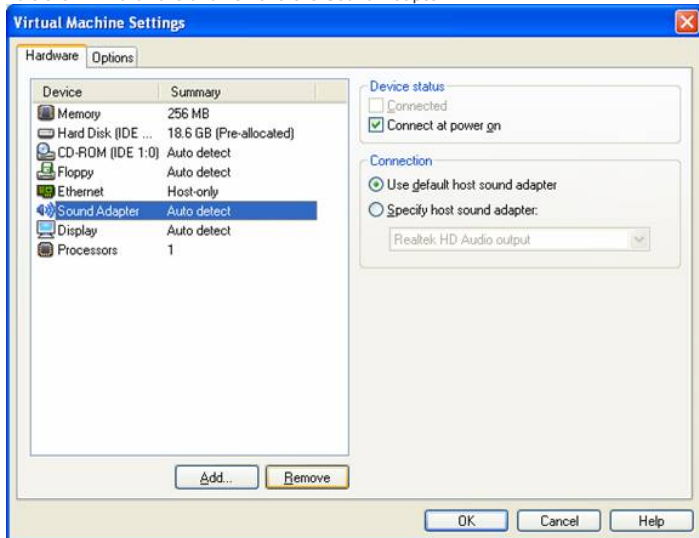
☐ Split disk into 2 GB files.

< Back Finish Cancel

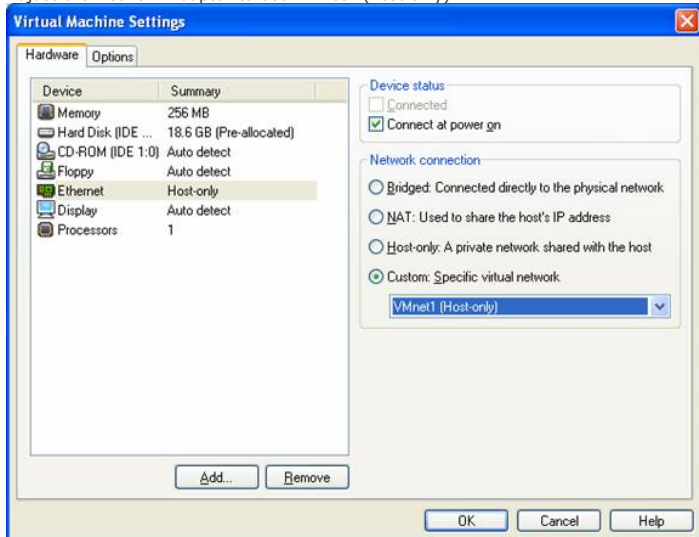
Click Finish and the VM is created.



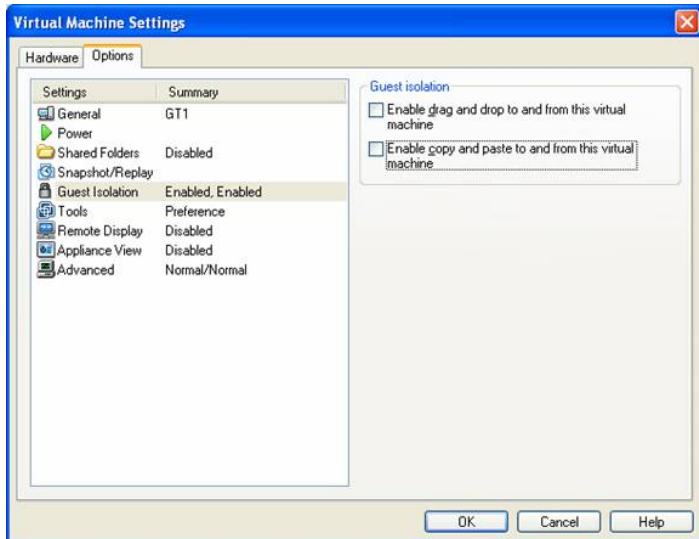
Edit the VM Hardware and remove the Sound Adapter



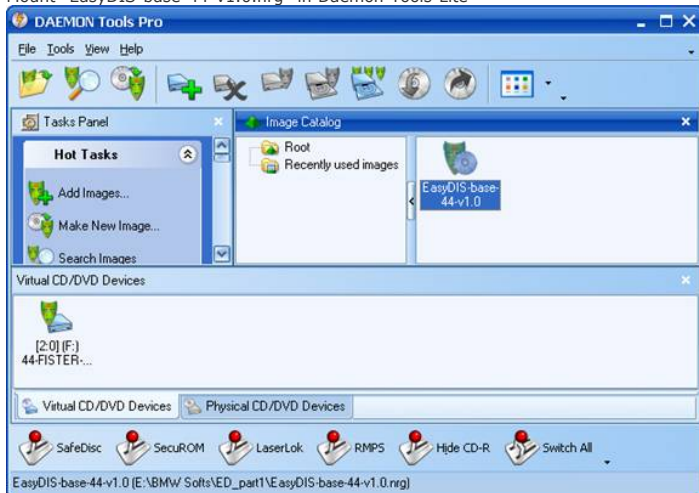
Adjust the Network Adapter to use VMNet1 (host only)



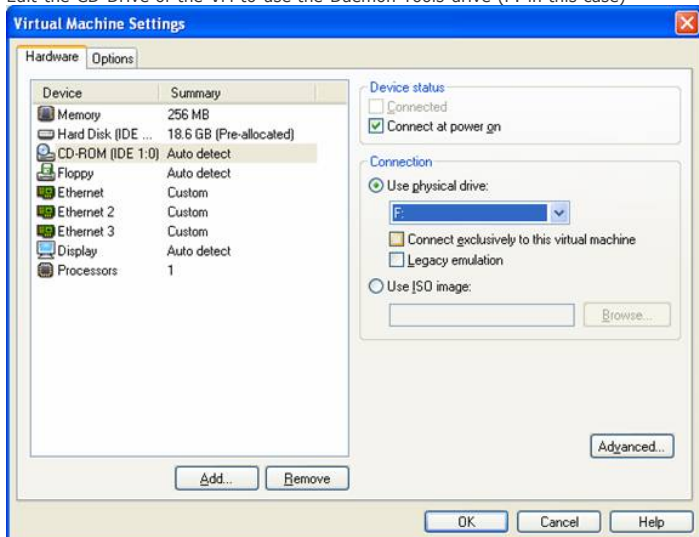
Switch to the VM Options tab and uncheck drag-and-drop from Guest Isolation



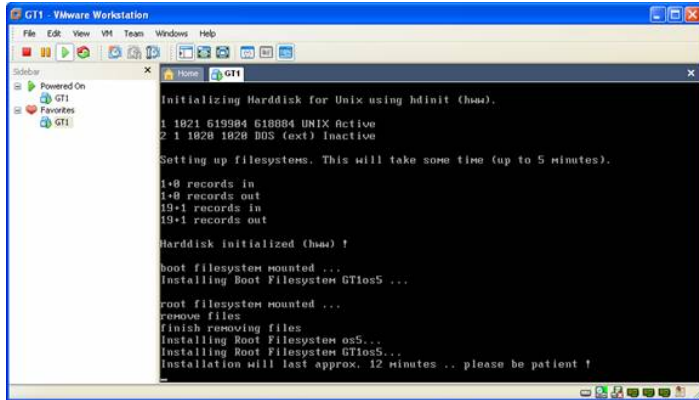
Mount "EasyDIS-base-44-v1.0.nrg" in Daemon Tools Lite



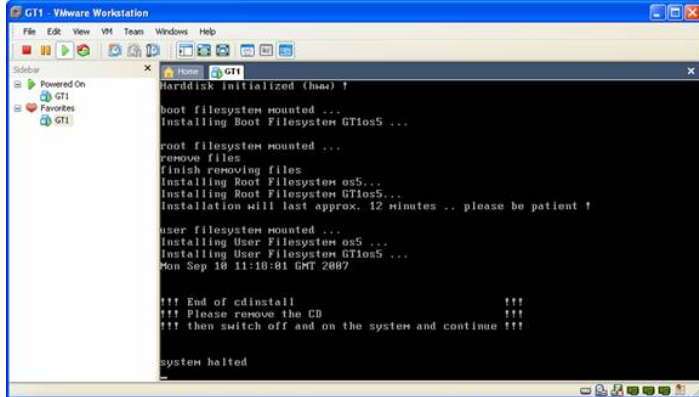
Edit the CD Drive of the VM to use the Daemon Tools drive (F: in this case)



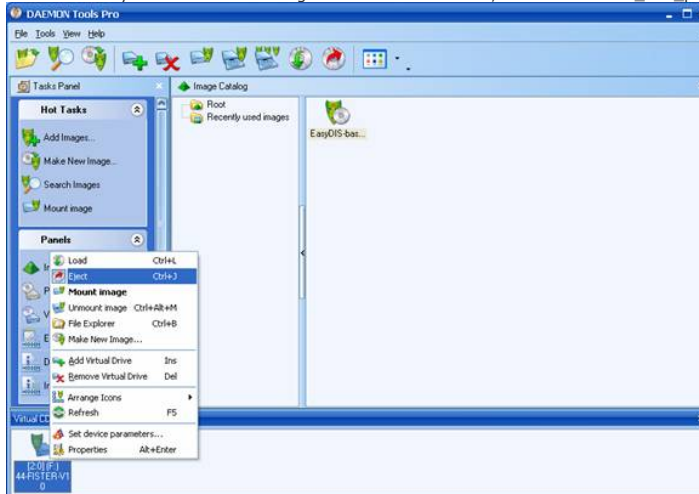
Start the VM. It will reboot once after installing the kernel, then GT1 will install.

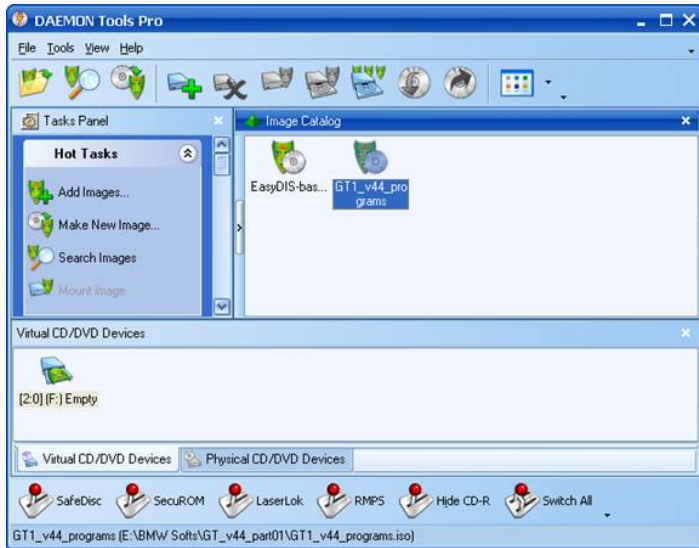


After the installation is finished, it will ask you to eject the CD and restart.. But DONT RESTART YET!

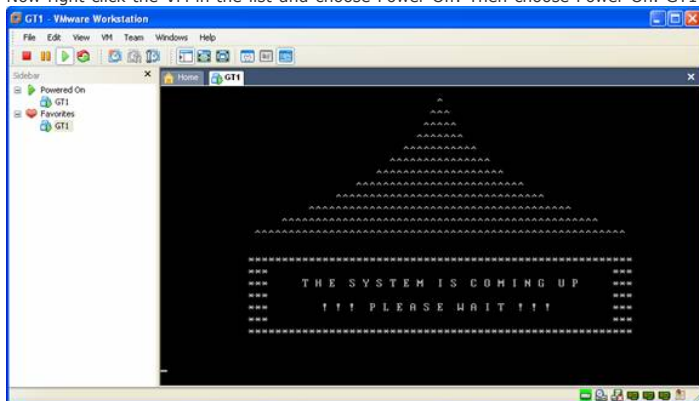


Unmount "EasyDIS-base-44-v1.0.nrg" in Daemon Tools Lite, and Mount "GT1\_v44\_programs.iso"

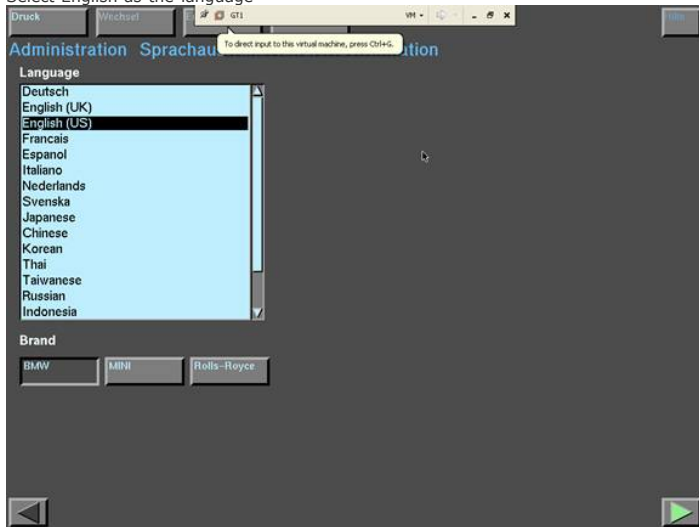




Now right click the VM in the list and choose Power Off. Then choose Power On. GT1 will finally come to life!



Select English as the language



Select USA as the country, and enter 12345 as the Dealer Number. Fill in the rest with whatever you'd like. After entering in everything, click the End button and select Quit.



Print Change End Services

Administration Language Break tion/Dealer identification

Language Dir. no.

US-English 12345

Country

Ukraine  
United Arab Emirates  
United Kingdom  
Uruguay  
USA  
Venezuela  
Viet Nam  
Yemen  
Zambia  
Zimbabwe

Company designation

Lord Vaders Autohaus

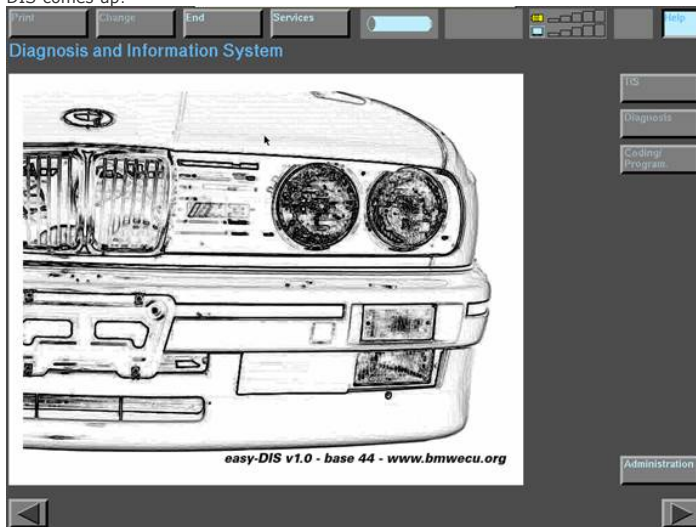
Address

The Death Star  
Mail Drop THX1138  
Moon of Endor

q w e r t y u i o p  
a s d f g h j k l  
z x c v b n m  
\_

7 8 9 +  
4 5 6 -  
1 2 3 \*  
0

DIS comes up!



Click the Administration button. Verify that the DIS v44 Programs CD is loaded. Then under DIS, click Installation.

Print Change End Services

Administration

TIS DIS Admin. Config.

Update Update Update System  
Installation Installation Connection setup Diagnostic head  
Data update Data Time Installation ELOS Printers  
Password Self-test Online server  
KDS Calibrating touch shield Online Services  
Diskcopy Language

CD drive allocation

CD drive 1 DIS V44.00 - (1/1): "13/03" Programs

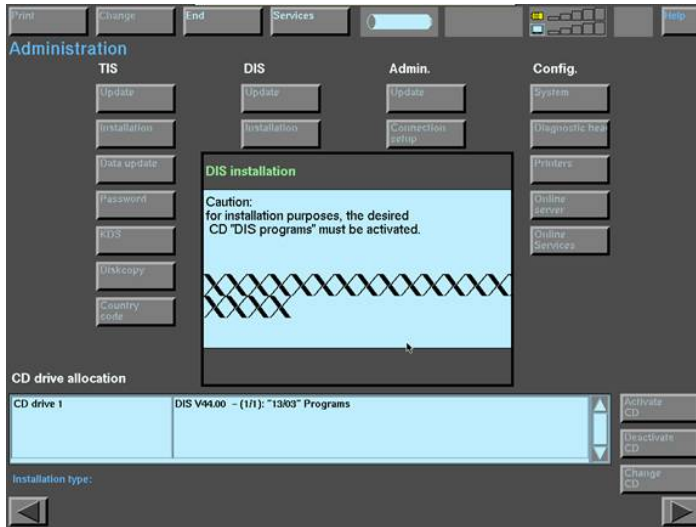
Activate CD  
Deactivate CD  
Change CD

Installation type:

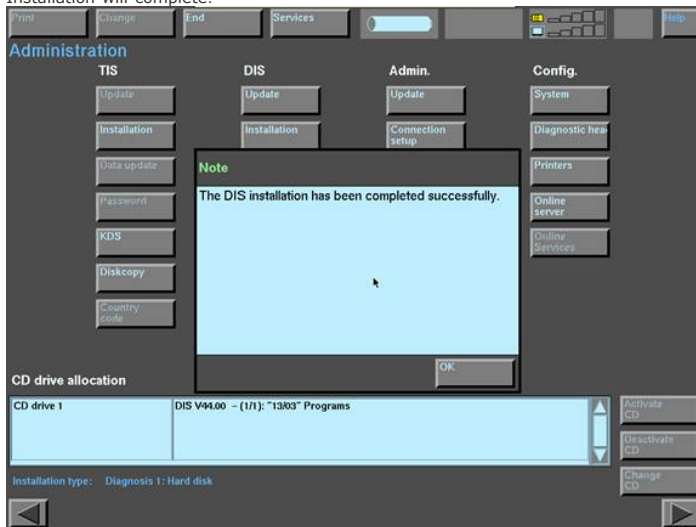
Enter the Dealer Number as the password. 12345



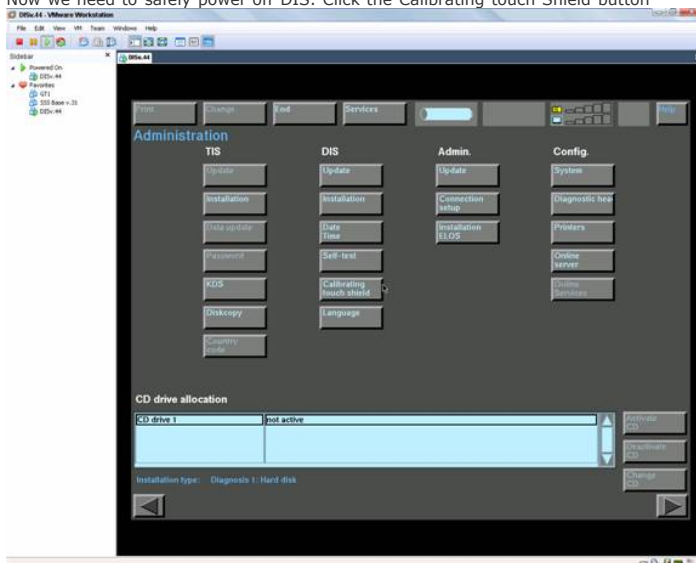
Wait a while....



Installation will complete!



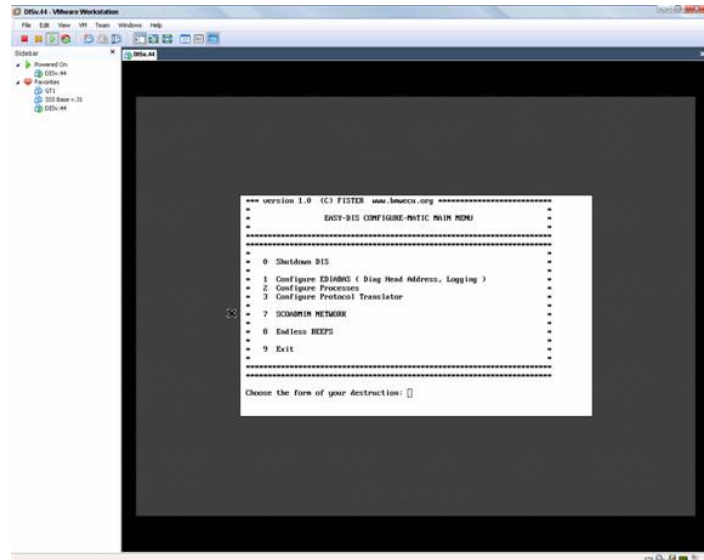
Now we need to safely power off DIS. Click the Calibrating touch Shield button



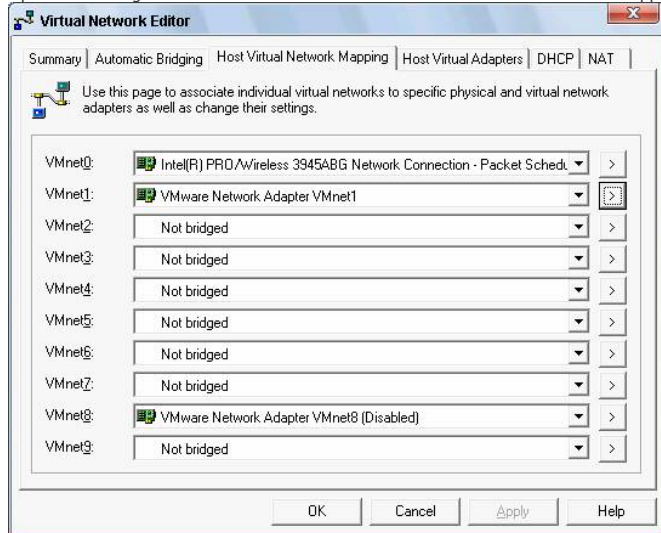
Type in the Dealer Number as the password: 12345



Now Press 0 to Shutdown DIS. You may also now unmount the DIS v44 Programs cd from Daemon Tools Lite.  
**You should ALWAYS shut down DIS via this method.**



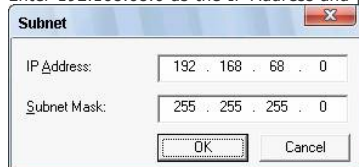
Now we need to make some changes in order to get the cable to communicate with DIS. Open the Manage Virtual Networks tool and click the Host Virtual Network Mapping tab.



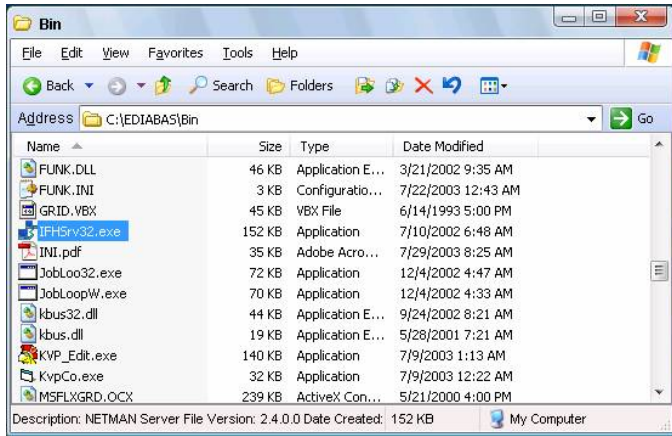
Under VMNet1, click the arrow and click Subnet...



Enter 192.168.68.0 as the IP Address and press OK.



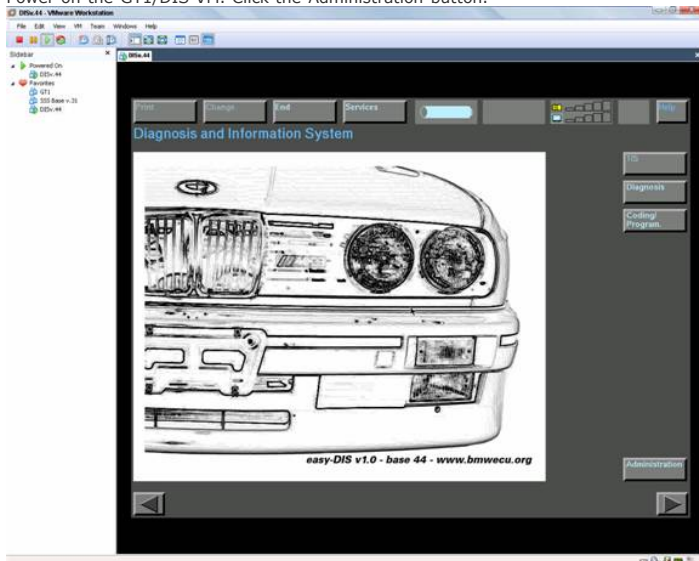
Navigate to "C:\EDIABAS\Bin" and launch IFHSrv32.exe  
\*Make sure your firewall/antivirus is disabled!\*



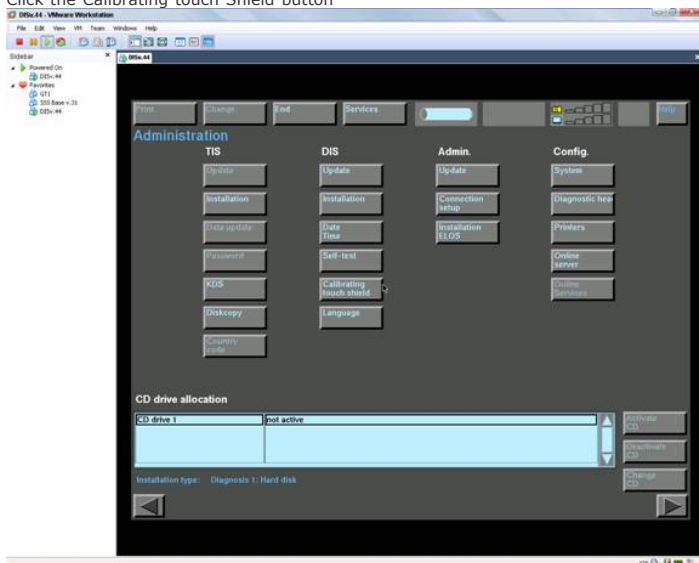
It will launch in the background and appear on the task bar. No window will come up.



Power on the GT1/DIS VM. Click the Administration button.



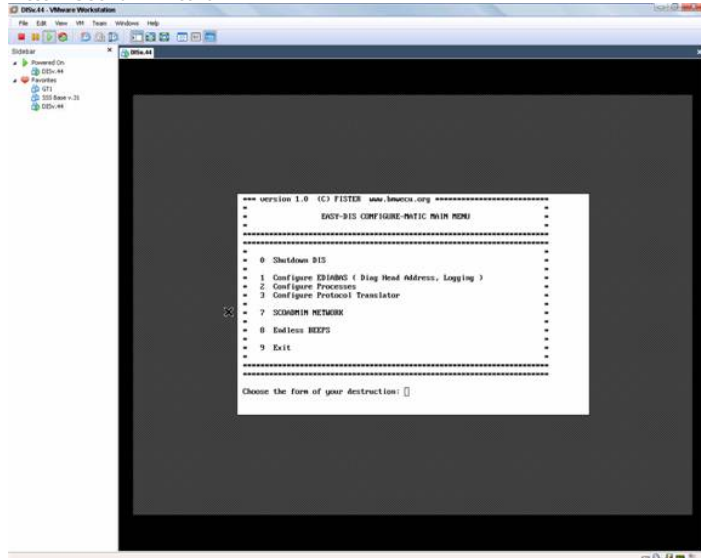
Click the Calibrating touch Shield button



Type in the Dealer Number as the password: 12345



Press 7 SCOAdmin Network



Apologies, currently no screen shots available yet

A window will pop up showing 2 green driver icons. At the top of the screen will be the SCO TCP/IP Loopback driver. DO NOT TOUCH THIS DRIVER!

Below that, you'll see a second driver, the AMD PCNet-PC1 Adapter Compatible -PC1 Bus#0, Device#17, Function#0. Click it and from Hardware menu, click Remove network device.

Now, go to the Hardware menu and click Add new LAN adapter. A window will pop up showing AMD PCNet-PC1 Adapter Compatible devices found on your computer. Click it and then Yes to add the new adapter.

Choose SCO TCP/IP as the protocol.

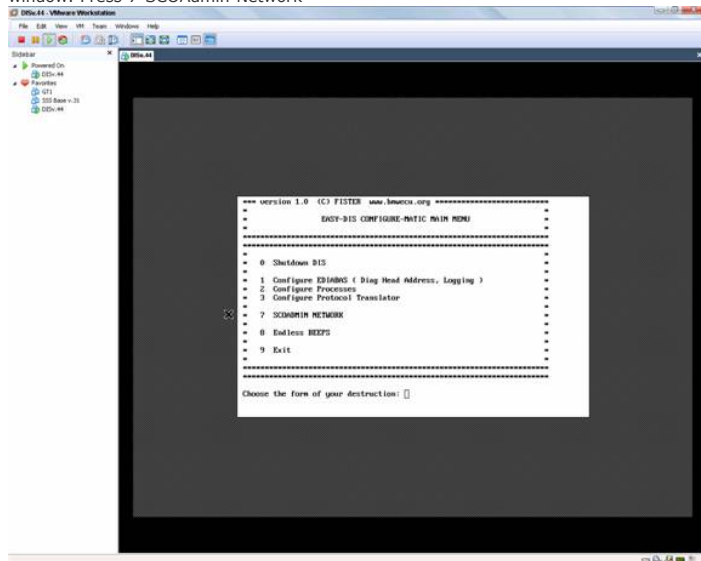
Change Local Host Name to: gt1ap

Change IP Address to 192.168.68.30

Everything else should automatically populate: Netmask: 255.255.255.0 Broadcast Address 192.168.68.255 TCP connections and Pseudo ttys lines. Click OK to accept.

Go to the Hardware menu and click Exit. A window will pop up for you to relink the kernel due to the changes you made. Choose Yes.

A black window will pop up asking you again to relink the kernel. Choose Yes to all prompts. The VM will reboot. Follow the instructions above to get back to this window. Press 7 SCOAdmin Network



Click somewhere in the screen and press CTRL+Print Screen(SysRq) to access the UNIX command line.

At the login prompt type root

Choose option 1 to choose a password. For the easiest to remember, I recommend: password

A few lines of text will be generated, the last being TERM = (scoansi) \_

Hit the enter key.

Type: cd /etc

Press enter

Type: vi hosts

Use the arrow key to move the cursor down to the entry 127.0.0.1 localhost

Press the "o" key to add an empty line below it.

Now, without any typing mistakes, add 192.168.68.1 diaghead diaghead

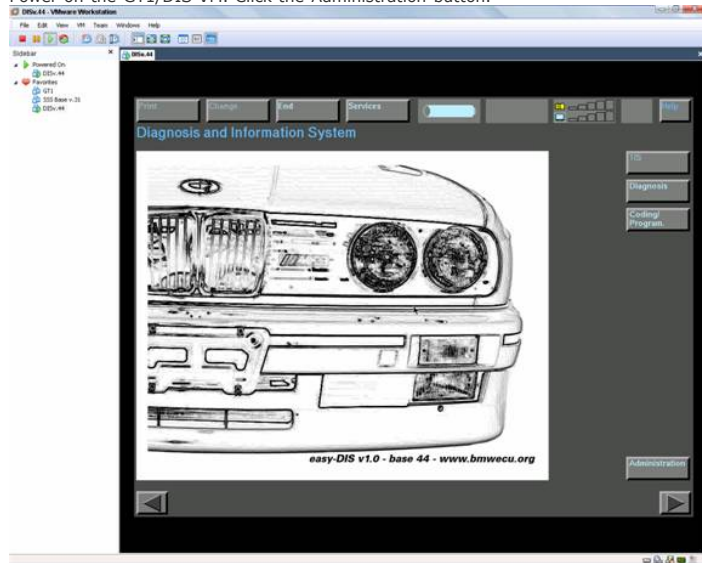
Keystrokes should be: 192.168.68.1(TAB)diaghead(SPACE)diaghead

Press ESC

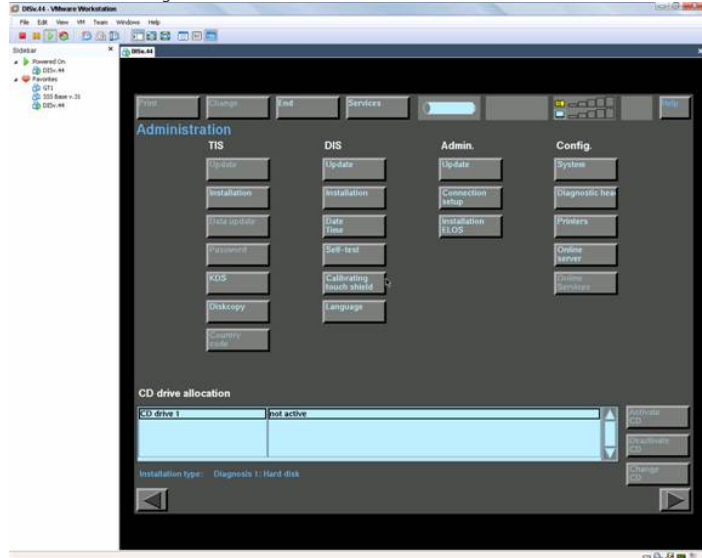
Type: :wq  
Now type: init 0

DIS should shut down.

Power on the GT1/DIS VM. Click the Administration button.



Click the Calibrating touch Shield button.

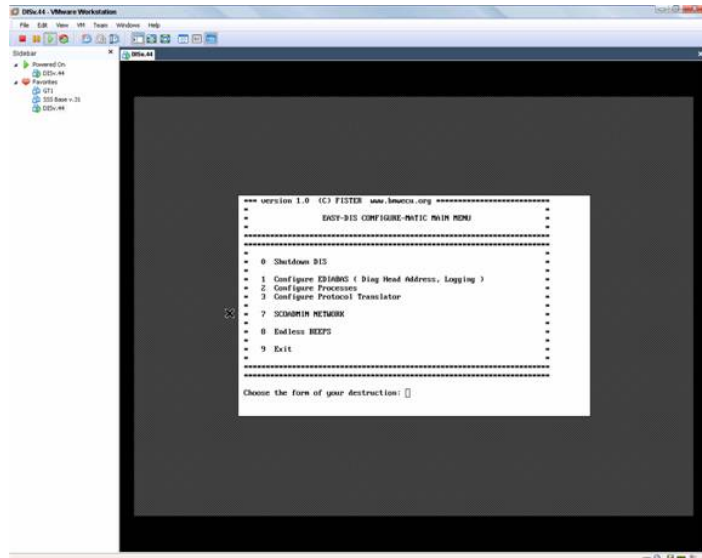


Type in the Dealer Number as the password: 12345

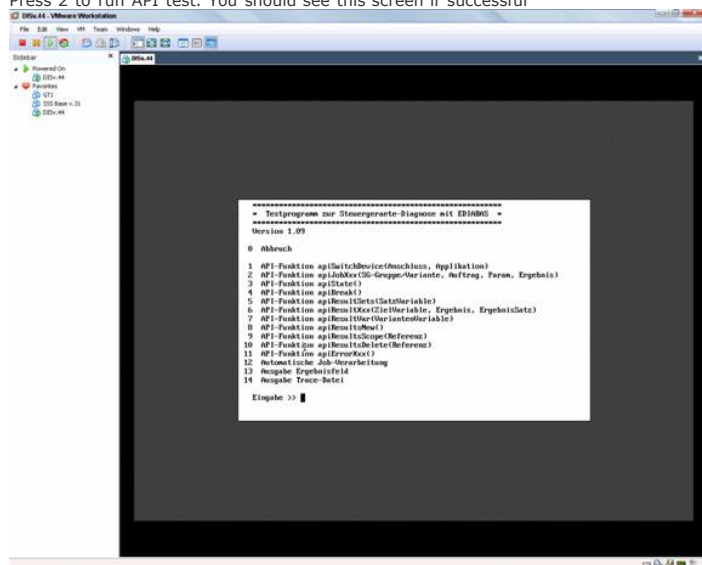


Press 1 to Configure EDIABAS.





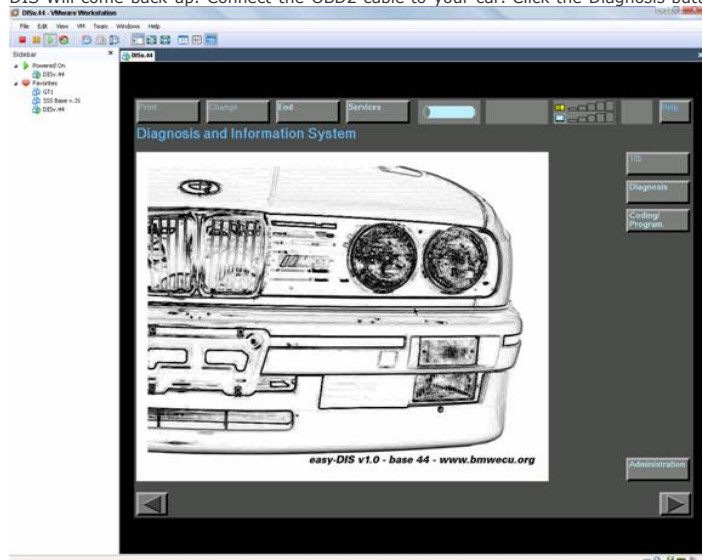
Press 2 to run API test. You should see this screen if successful



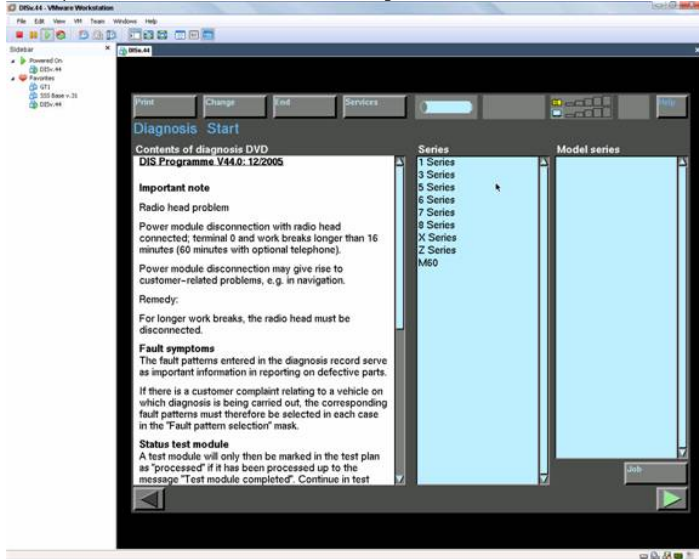
If not, you have a network communication problem.

Exit the screen by pressing 0. When back to the main screen, press 9 to Exit.

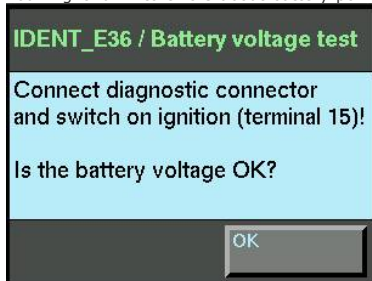
DIS Will come back up. Connect the OBD2 cable to your car. Click the Diagnosis button.



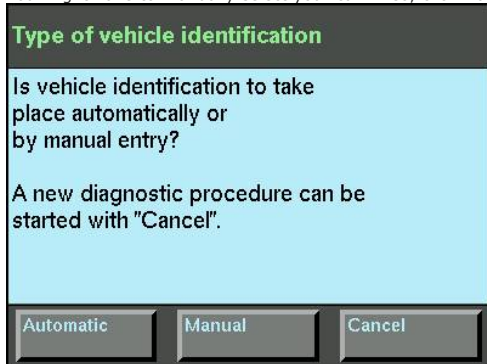
Select your Series and Model series. Click the green arrow.



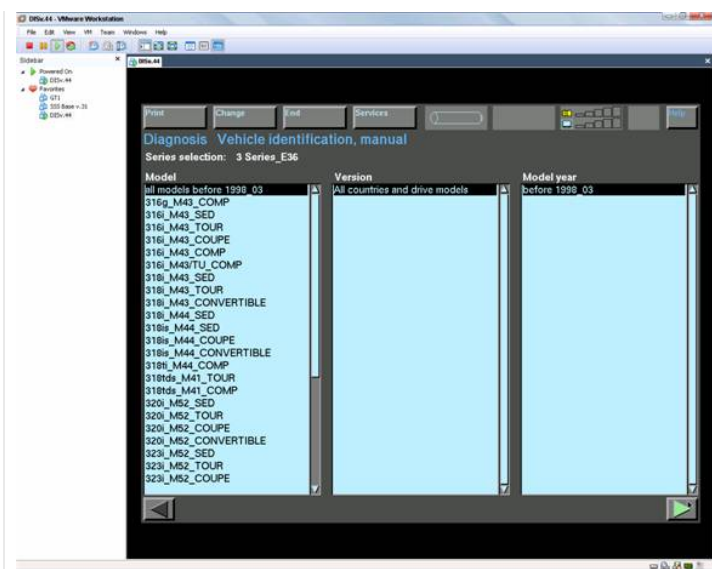
You might run into errors about battery power. Click OK.



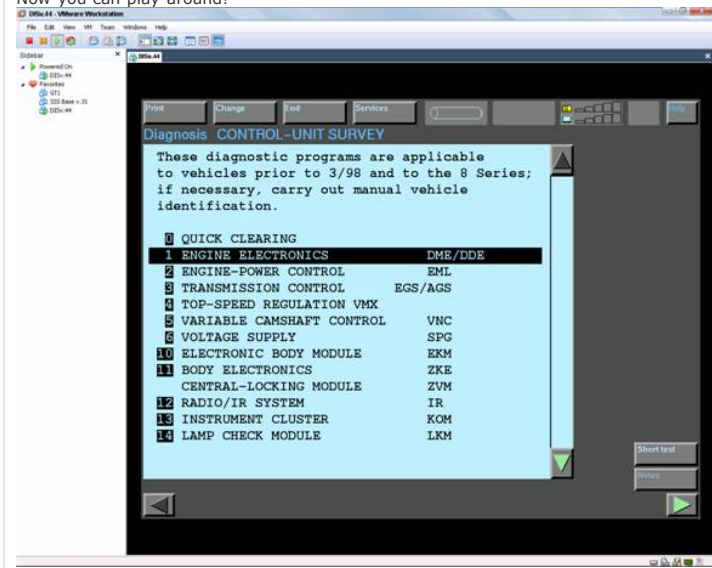
You might have to manually select your car. If so, click Manual.



Choose your car and click the green arrow.



Now you can play around!



Further tinkering around with the software is done **AT YOUR OWN RISK.**

Info taken from: <http://forums.bimmerforums.com/forum....php?t=1401774>  
<http://forums.bimmerforums.com/forum...67&postcount=4>  
"Using CarSoft Interface with INPA" PDF, by MaikelK  
Last edited by spencers; 06-27-2011 at 11:25 AM.

Reply | Reply With Quote

03-22-2011 12:58 PM

#4



**spencers**   
Enforcer

Join Date: Dec 1969

Location: Texas

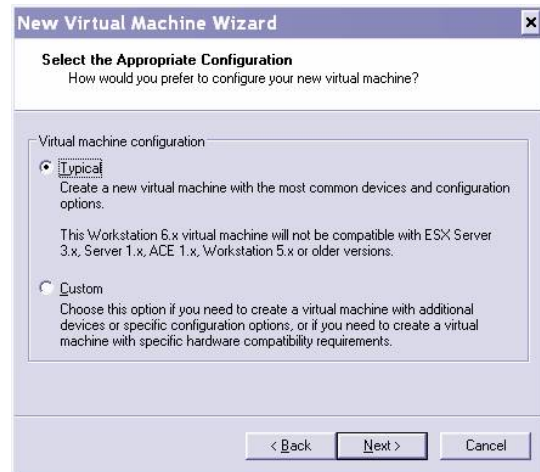
My Ride: 2001 325Ci ZSP

Posts: 706

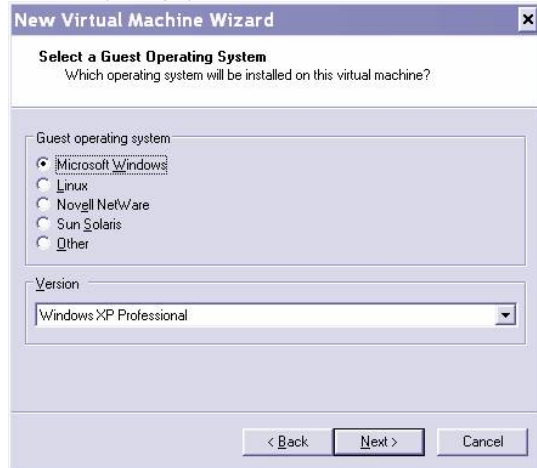
**SSS/Progman**  
Installing this program is very intuitive, and requires the use of the Registry Editor. Again, I assume you already have your computer set up with the OBD2 cable and fully working with the EDIABAS protocol and INPA communicating with your car. **This is imperative before continuing!** What you'll need:

- **SSS Base 3.1 hack.iso** Password: zhpmafia
- **BMW.SSS.Progman.v28.0.0.9.iso** Password: zhpmafia
- **Changes.iso** Password: zhpmafia
- **VMWare Workstation** Password: zhpmafia
- **Daemon Tools Lite**
- Working VAGCOM cable from (Post 1)
- Working EDIABAS/INPA install from (Post 2)

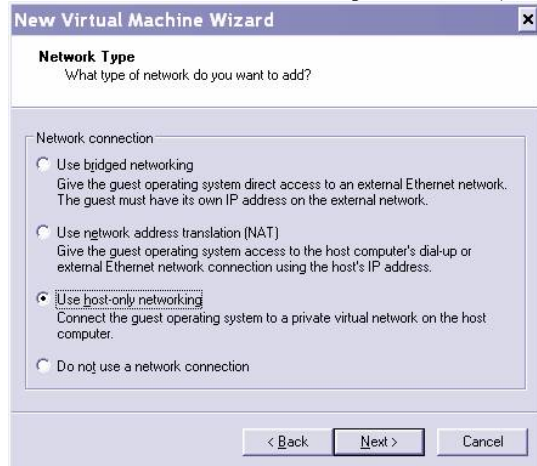
If you don't already have VMWare Workstation installed, install it as normal. Open VMWare and create a new virtual machine. Select Typical.



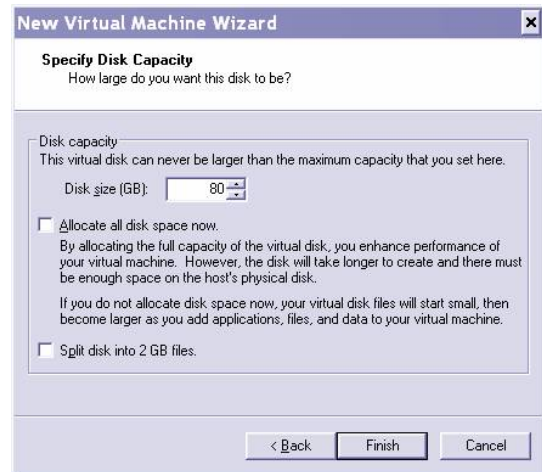
Select the operating system: Microsoft Windows, and select the version: Windows XP.



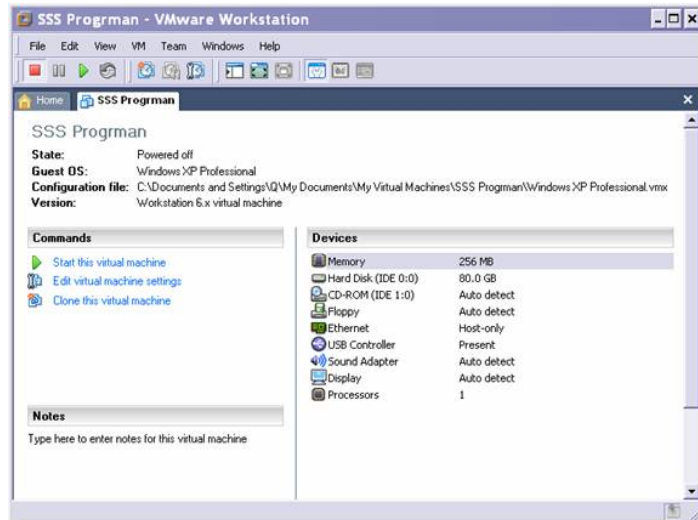
Give the virtual machine a name. SSS Progman is fine. Next, select Use host-only networking.



Set your disk size to 80 GB. You don't need to allocate all disk space now.



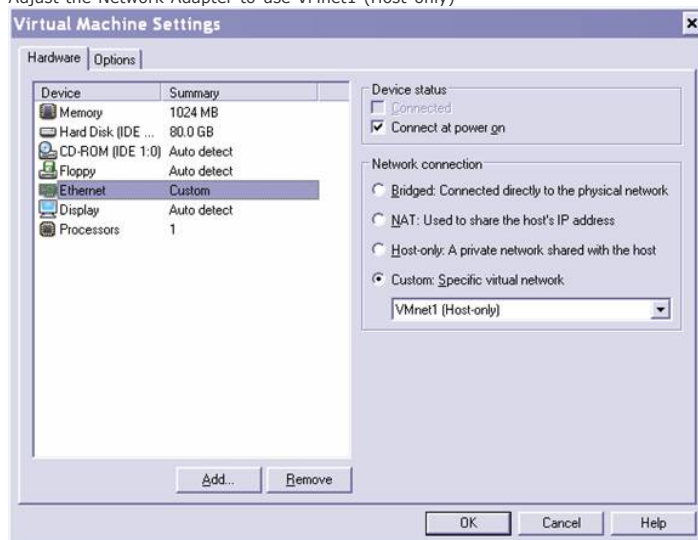
The VM is created!



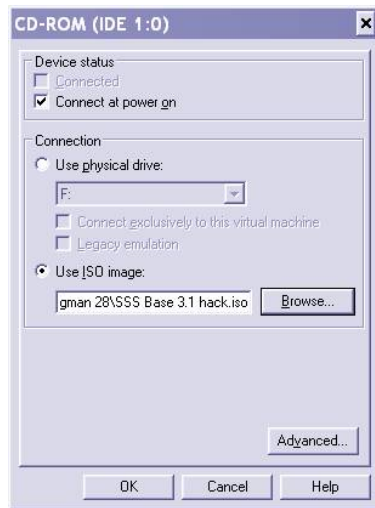
Now, edit the VM and remove the USB controller and the Sound Adapter.

Increase the Memory to 1gb.

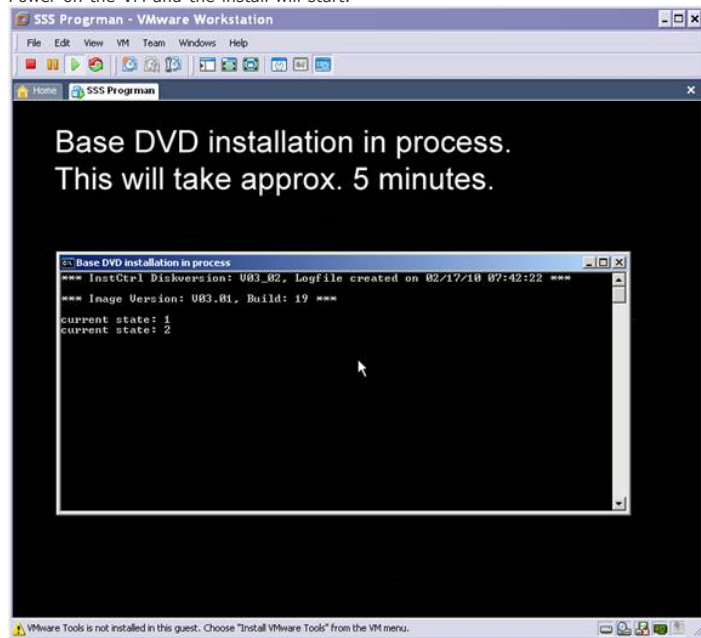
Adjust the Network Adapter to use VMnet1 (Host-only)



Edit the CD drive to Use ISO image: SSS Base 3.1 hack.iso

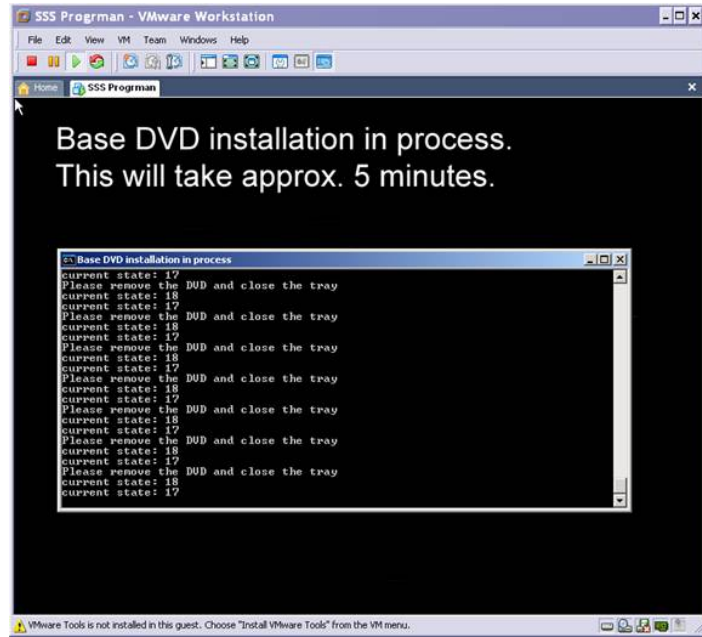


Power on the VM and the install will start.

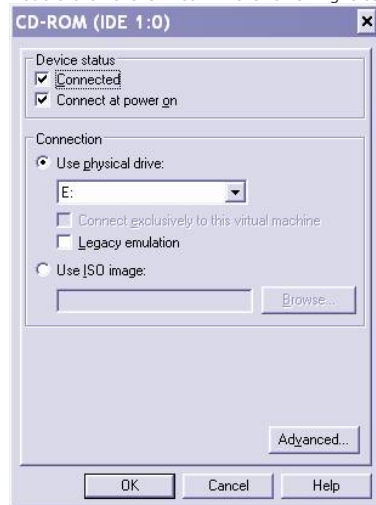


When it completes, it will ask you to eject the CD.

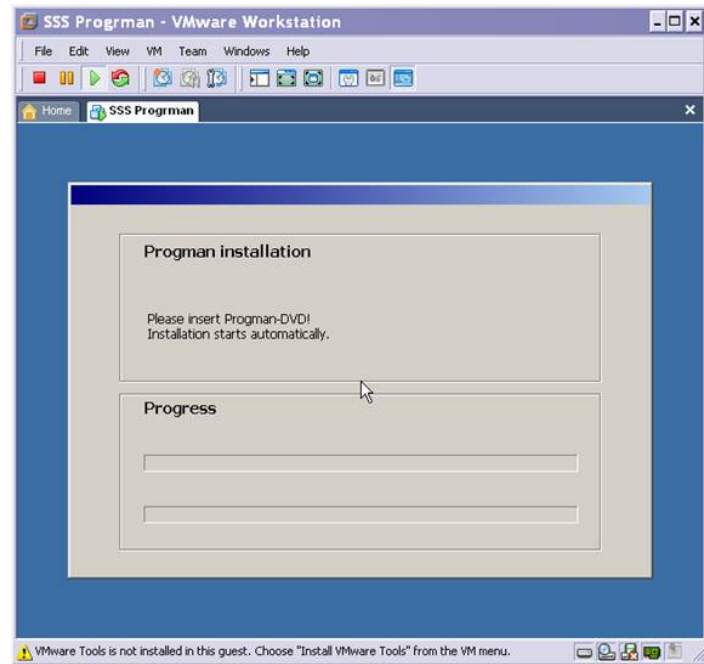




Double click the CD icon in the lower-right corner of the VMWare window. Change Connection to Use physical drive.

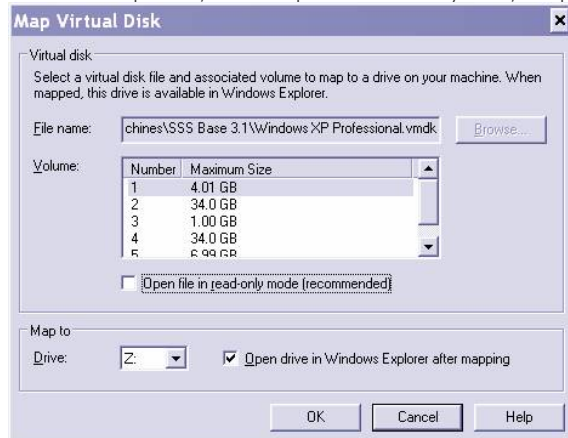


Power off the VM, then power it back on. The installation will begin.  
If the installer asks you for the Progman installation disk, press cancel!

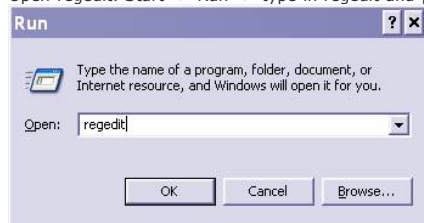


When complete, power off the VM. Double click the VM's Hard Disk (under devices in the main VMWare window). Select Utilities -> Map.

Select the first partition, uncheck Open file in read-only mode, and press OK.



Open regedit. Start -> Run -> type in regedit and press OK.

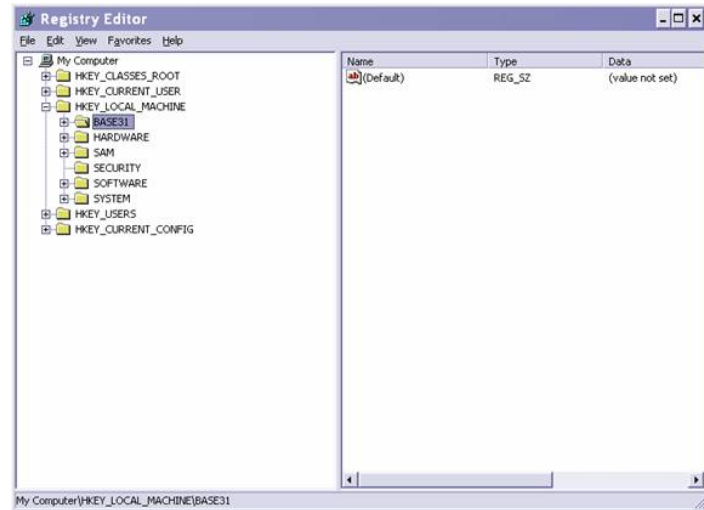


In the Registry Editor, click File -> Load Hive.

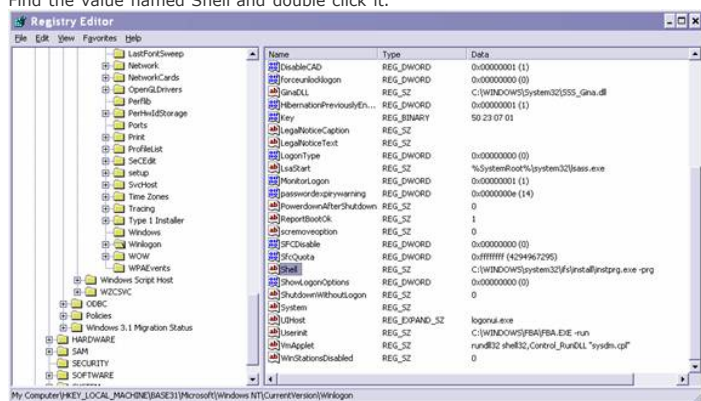
Browse or copy-paste the location Z:\Windows\System32\Config\Software

Give the hive the name of BASE31

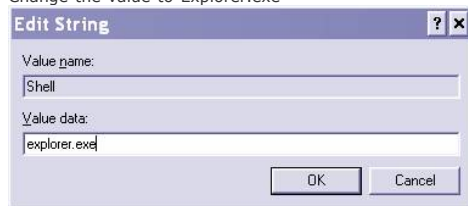
It will then show up in the registry.



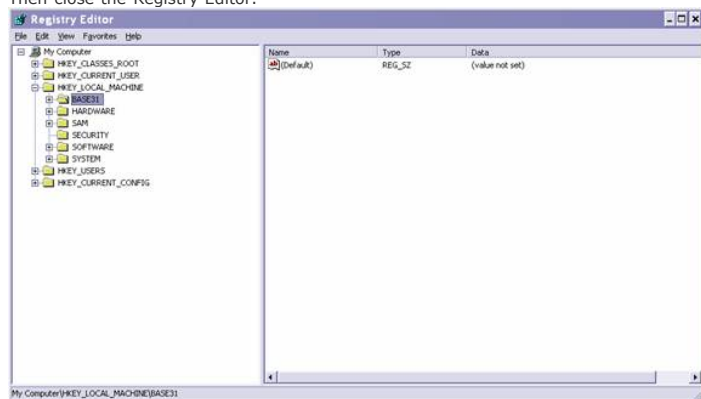
Drill down to BASE31\Microsoft\Windows NT\Current Version\Winlogon  
Find the value named Shell and double click it.



Change the value to Explorer.exe



Collapse the folder so that BASE31 is highlighted  
Go to File -> Unload Hive  
Then close the Registry Editor.

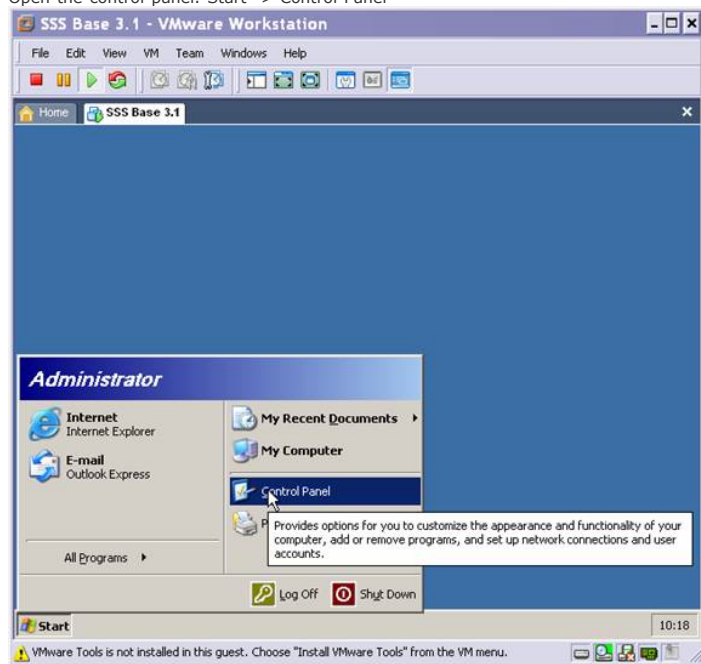


Go back to VMWare and open the properties for the Hard Disk again and select Utilities -> Disconnect

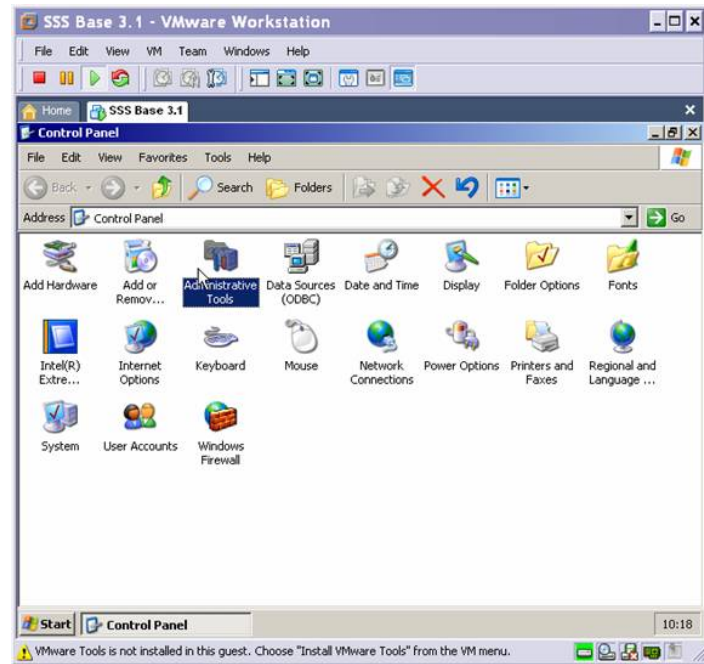


Start the Progman VM and it should boot into Windows XP. Click cancel to any messages about installing new hardware. Now log-off the machine. Start -> Log Off  
Log back in with the username: Administrator  
and the password: ++Xs4Progman

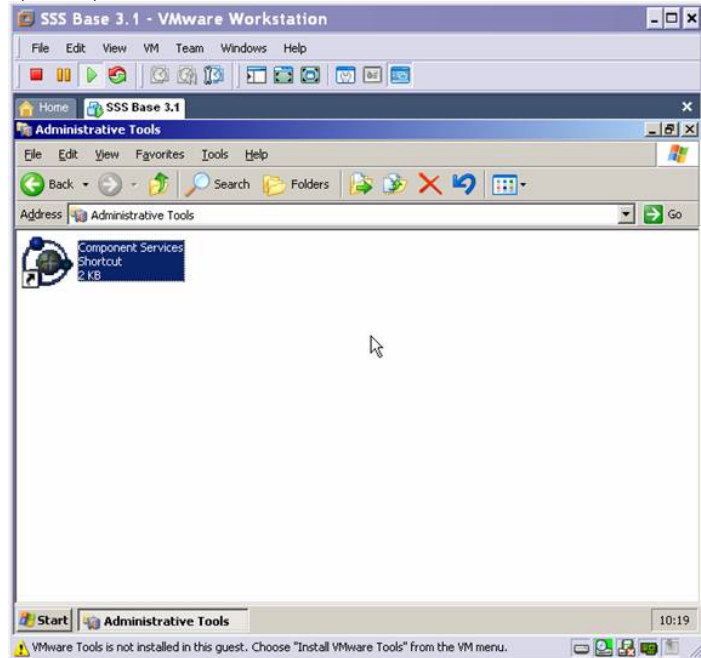
Open the control panel. Start -> Control Panel



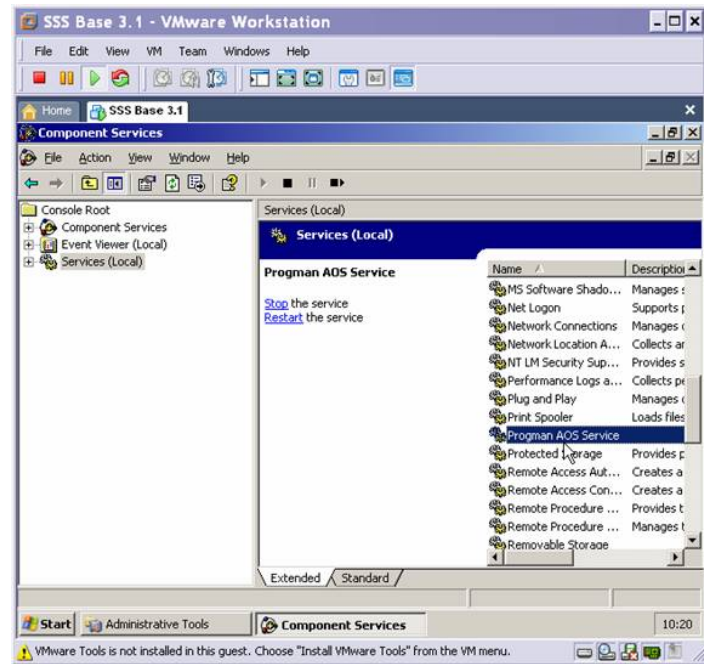
Open Administrative Tools



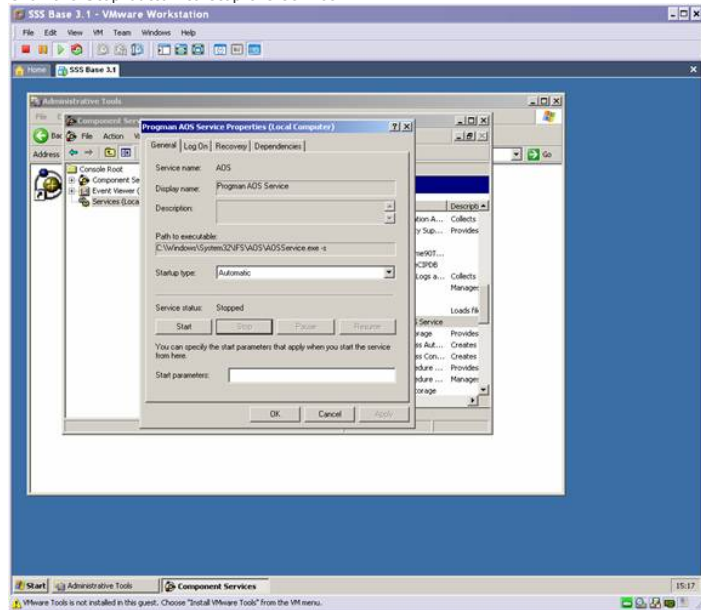
Open Component Services



Choose Services (Local) and find Progman AOS Service. Double click it.

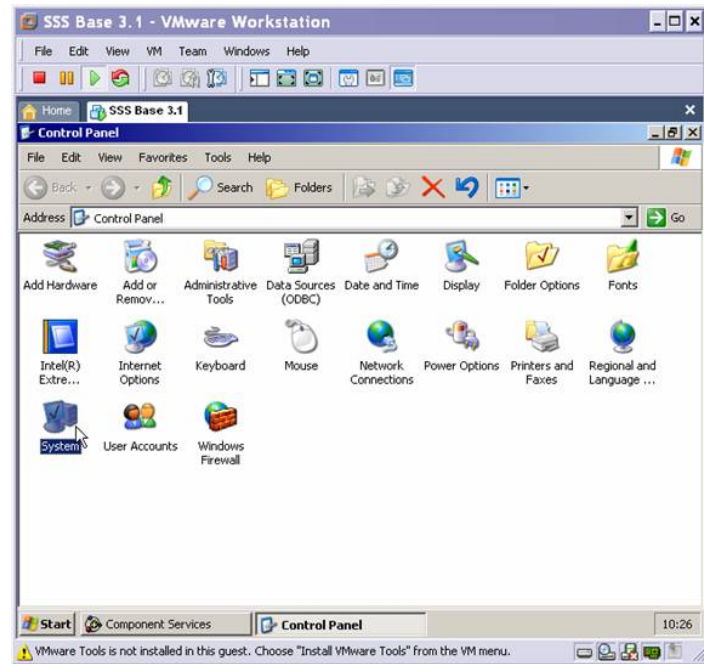


Click the Stop button to stop the service.

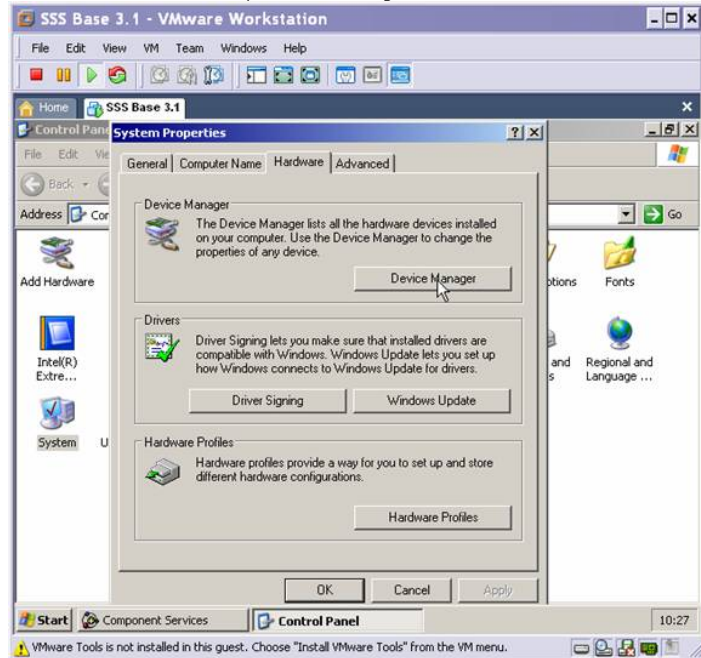


Close out, go back to the Control Panel and open System.

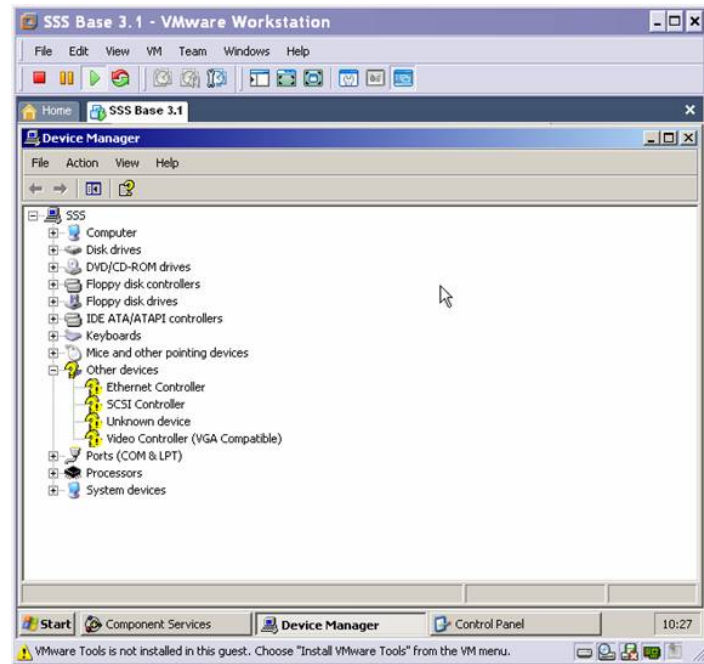




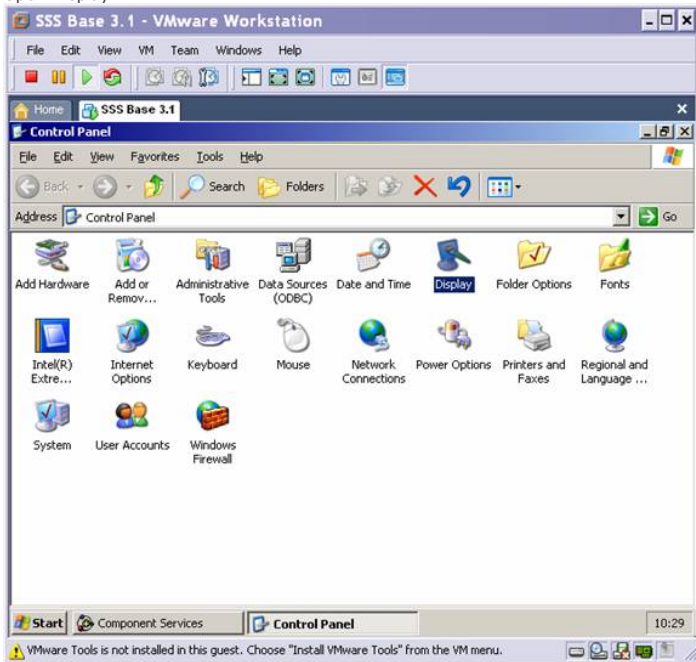
Click the Hardware tab and open Device Manager



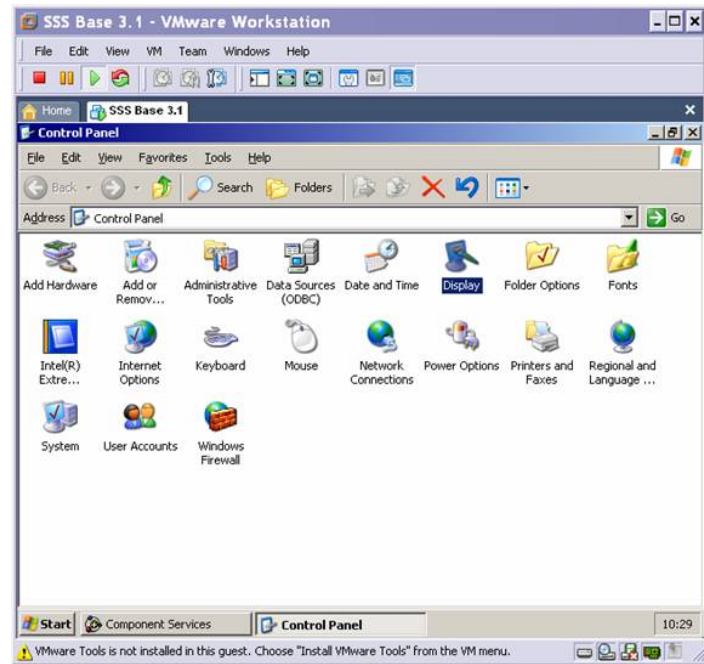
At this point, we need to install VMWare Tools. Go to the VM menu at the top of the VMWare window and Install VMWare Tools. After installing, it may ask you to restart. If it does restart, be sure to follow the directions again to log-out and log back in as Administrator with the password ++Xs4Progman. Again, click cancel to any messages about installing new hardware.



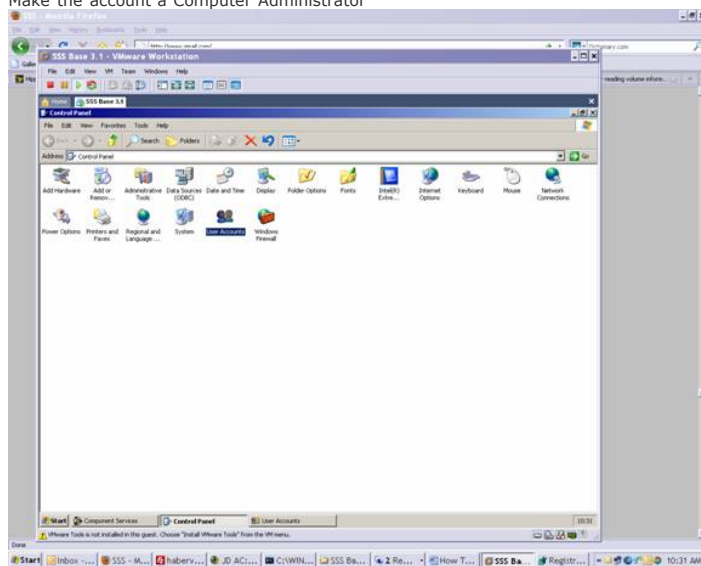
Open the Control Panel. Start -> Control Panel  
Open Display.



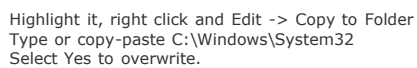
Set the resolution to 1024x768 and click OK.



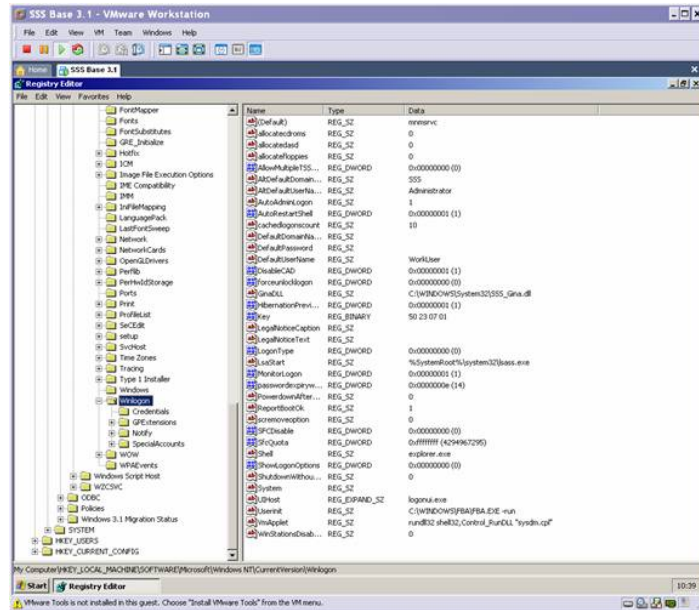
Open User Accounts  
 Click on WorkUser  
 Select Change Account Type  
 Make the account a Computer Administrator



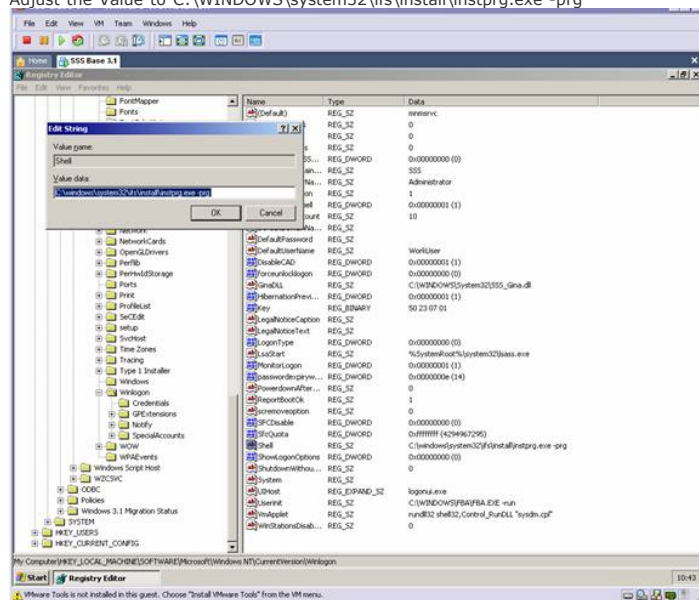
Double click the CD icon in the lower-right corner of the VMWare window. Change Connection to Use ISO, and select SSS Base 3.1 hack.iso



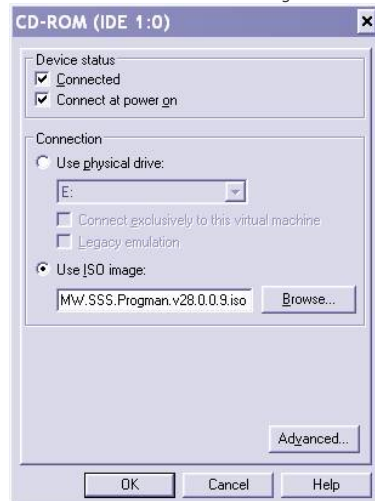




Find the value named Shell and double click it.  
Adjust the Value to C:\WINDOWS\system32\ifs\install\instprg.exe -prg

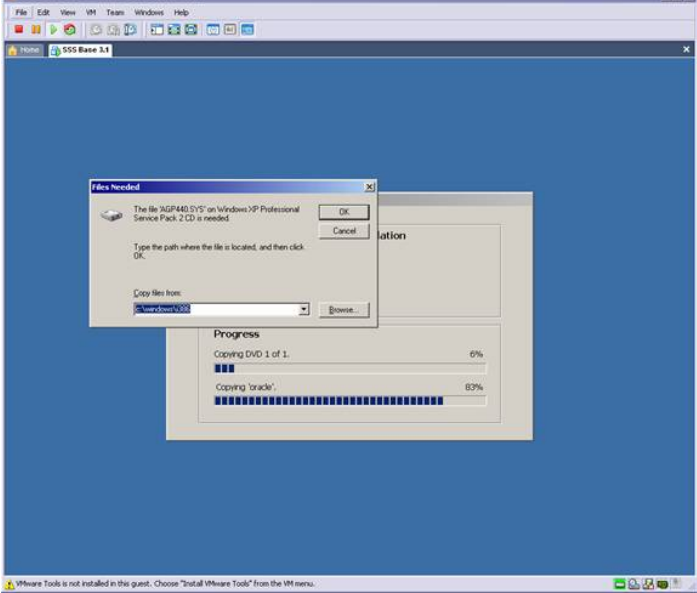


Shut down the VM. Start -> Shut Down  
Edit the CD drive to Use ISO image: BMW.SSS.Progman.v28.0.0.9.iso

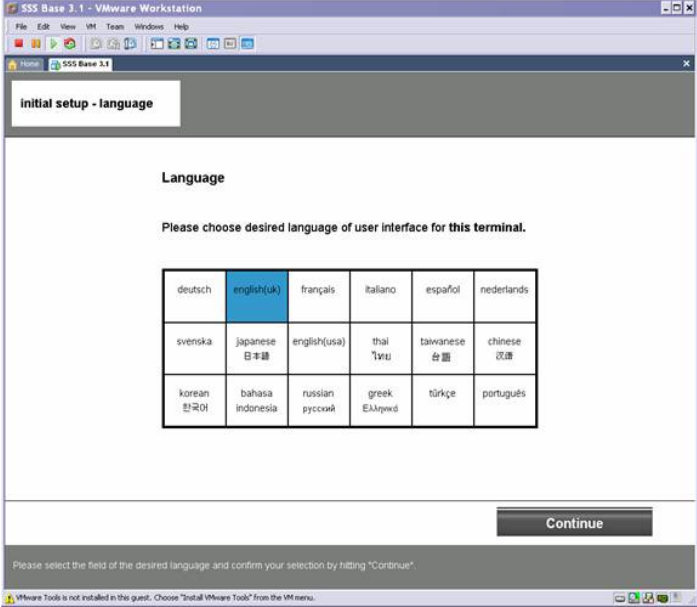




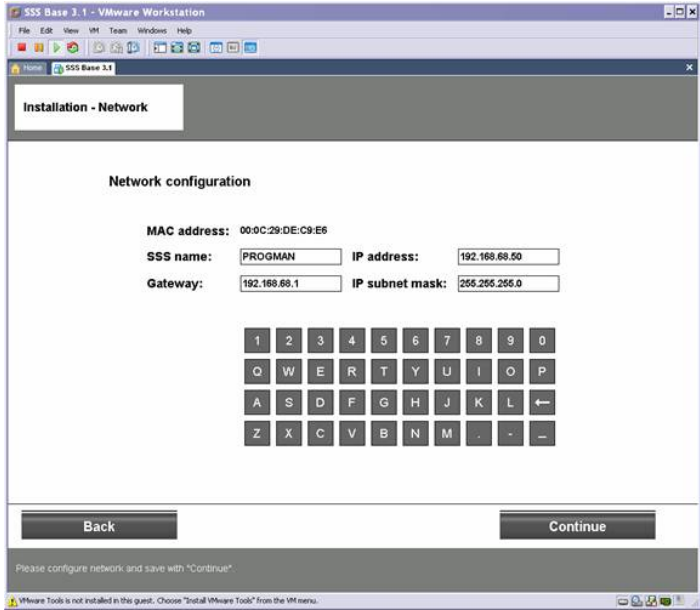
Power on the VM and the installation will begin. Click Cancel to any message(s) about agp440.sys



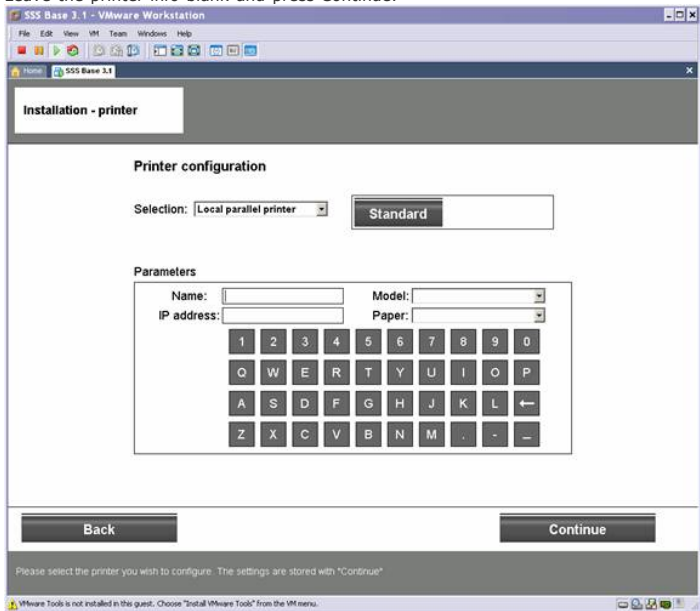
When finished, you'll finally land at a setup screen! Select English and press Continue.



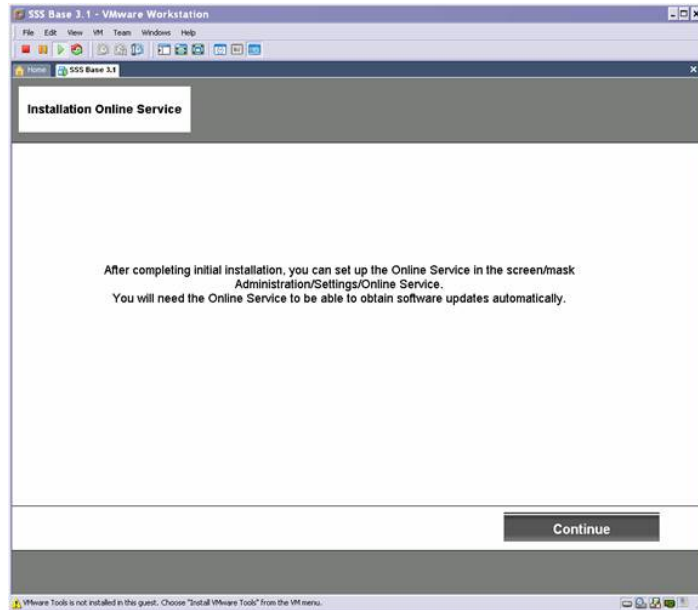
Enter the information seen below into the fields  
SSS name: PROGMAN  
IP address: 192.168.68.50  
Gateway: 192.168.68.1  
IP subnet mask: 255.255.255.0



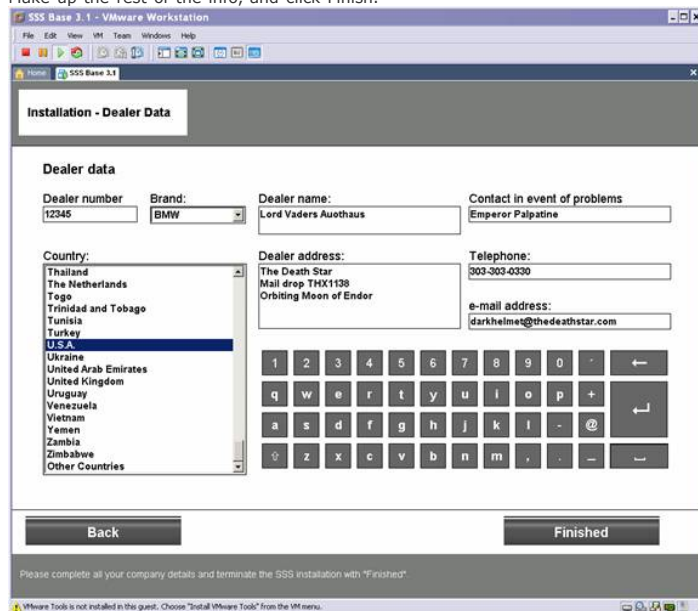
Leave the printer info blank and press Continue.



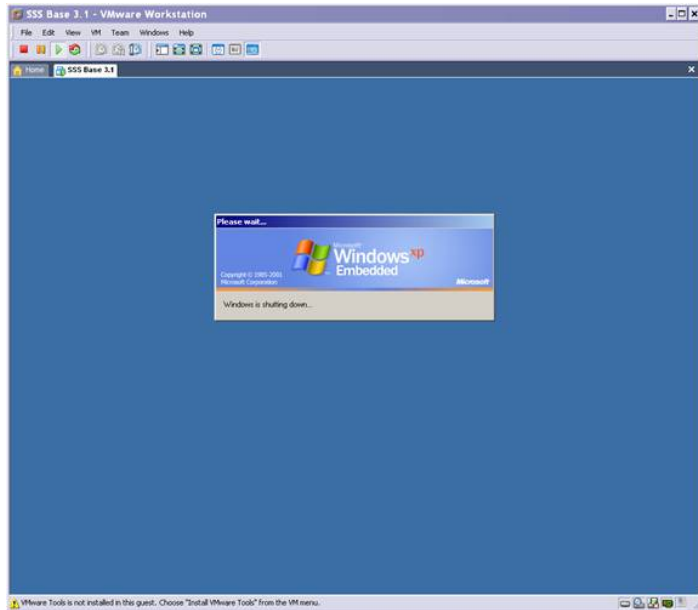
Click Continue again.



Select USA. For the Dealer Number, enter 12345  
Make up the rest of the info, and click Finish.



Windows will shut down and attempt to reboot. As soon as it shuts down, POWER OFF the VM to prevent it from restarting.

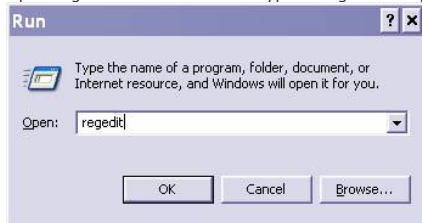


We must now make some more changes with the Registry Editor. Double click the VM's Hard Disk (under devices in the main VMWare window). Select Utilities -> Map.

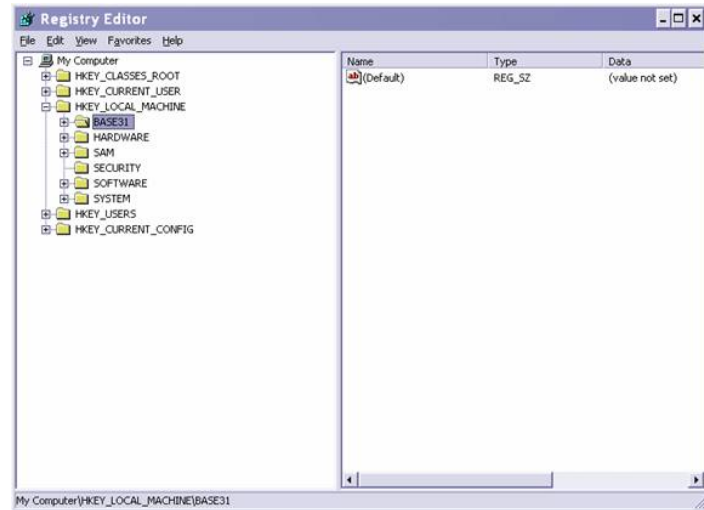
Select the first partition, uncheck Open file in read-only mode, and press OK.



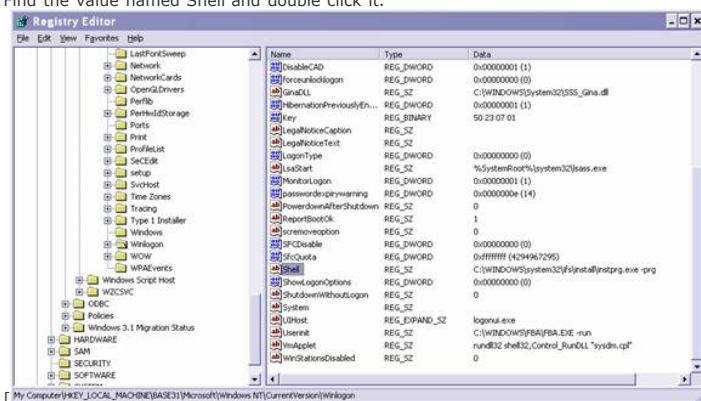
Open regedit. Start -> Run -> type in regedit and press OK.



In the Registry Editor, click File -> Load Hive.  
Browse or copy-paste the location Z:\Windows\System32\Config\Software  
Give the hive the name of BASE31  
It will then show up in the registry.



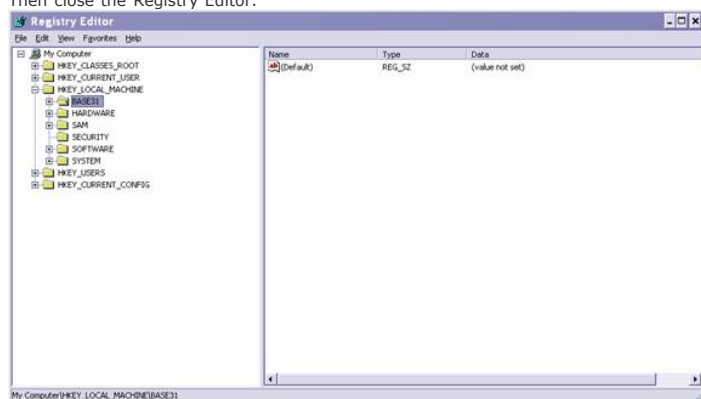
Drill down to BASE31\Microsoft\Windows NT\Current Version\Winlogon  
Find the value named Shell and double click it.



Change the value to Explorer.exe



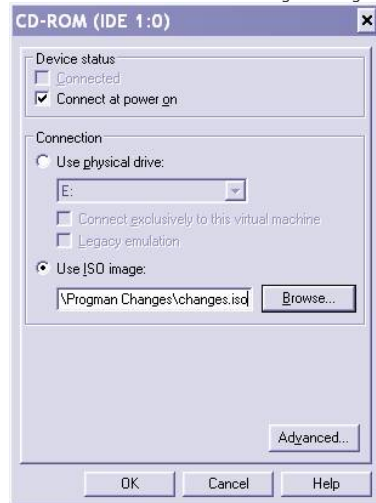
Collapse the folder so that BASE31 is highlighted  
Go to File -> Unload Hive  
Then close the Registry Editor.



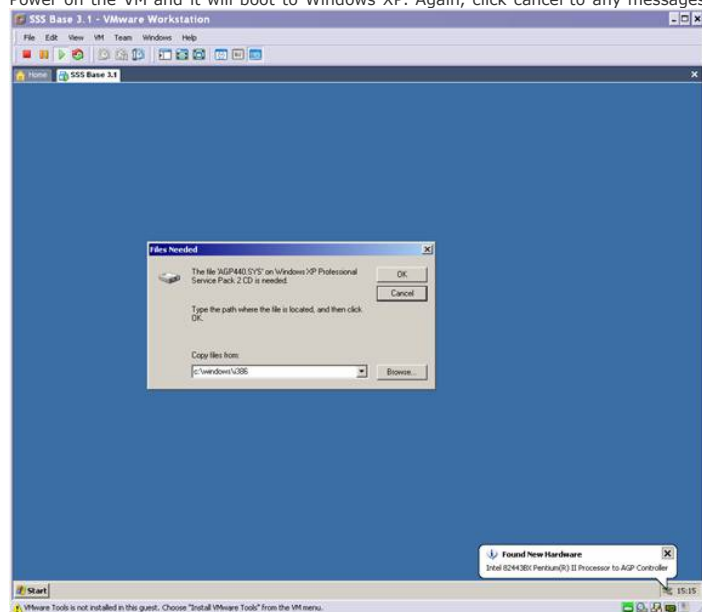
Go back to VMWare and open the properties for the Hard Disk again and select Utilities -> Disconnect



Edit the CD drive to Use ISO image: changes.iso

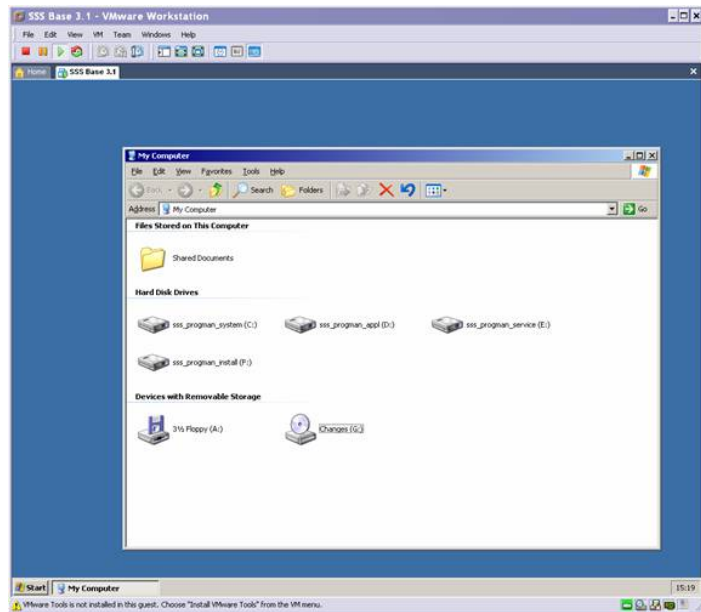


Power on the VM and it will boot to Windows XP. Again, click cancel to any messages about agp440.sys



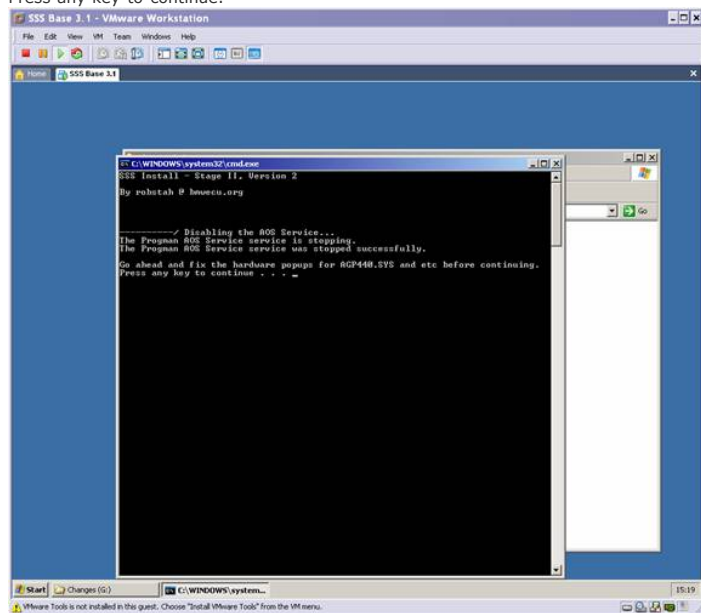
Open My Computer. Start -> My Computer



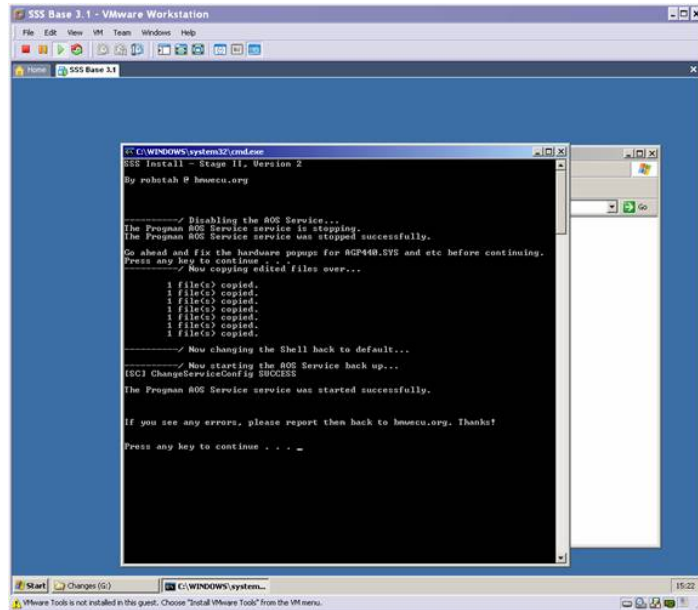


Double click the CD Drive Changes (drive letter)

A command window should open. If the window does not open and you just see the contents of the CD drive, double click sss\_stage2  
Press any key to continue.



The command window will make some changes and ask you to press any key to continue again.



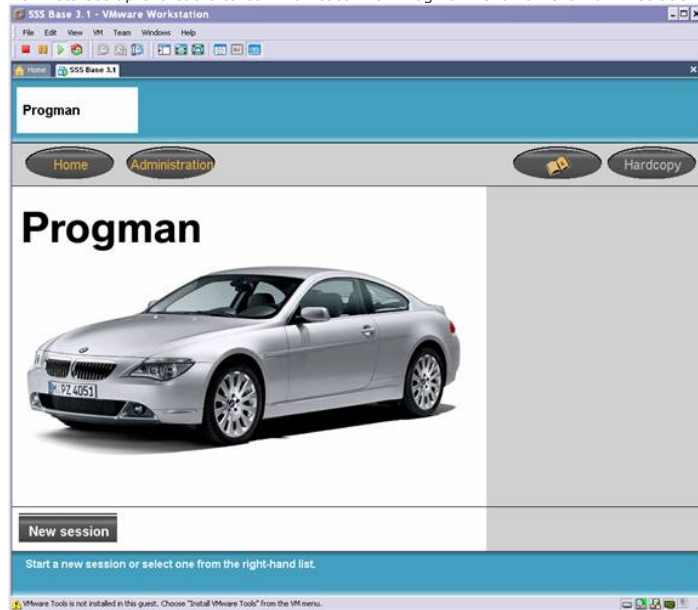
Now restart the VM. Start -> Shutdown -> Restart

While the VM is restarting, open IFHSrv32.exe on your computer from C:\EDIABAS\Bin

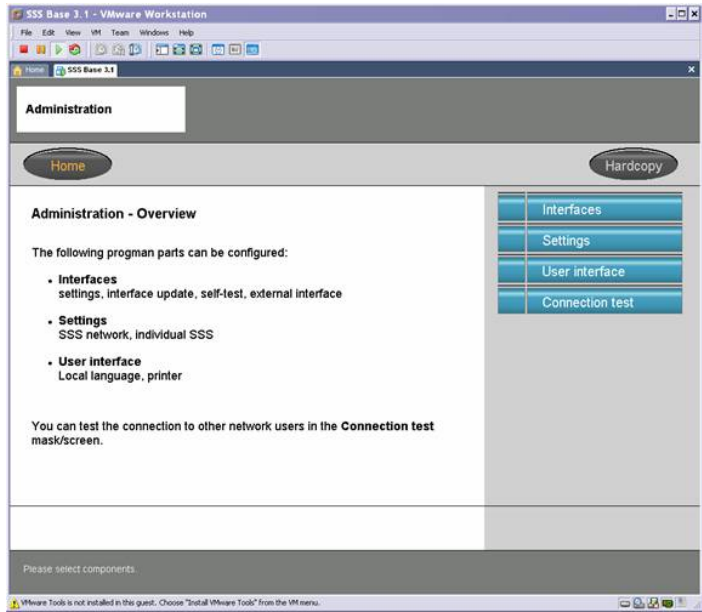
**Make sure your firewall/antivirus is disabled!**

Progman will finally come up!

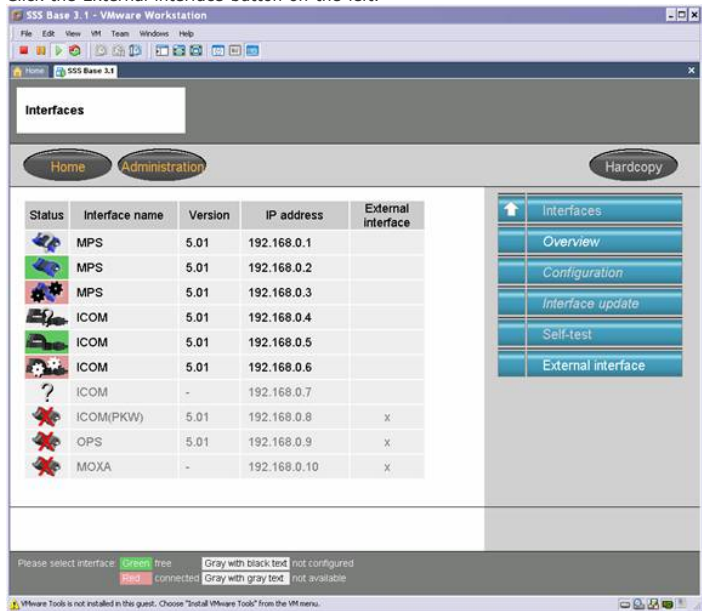
Now lets set up the cable to communicate with Progman. Click on the Administration button.



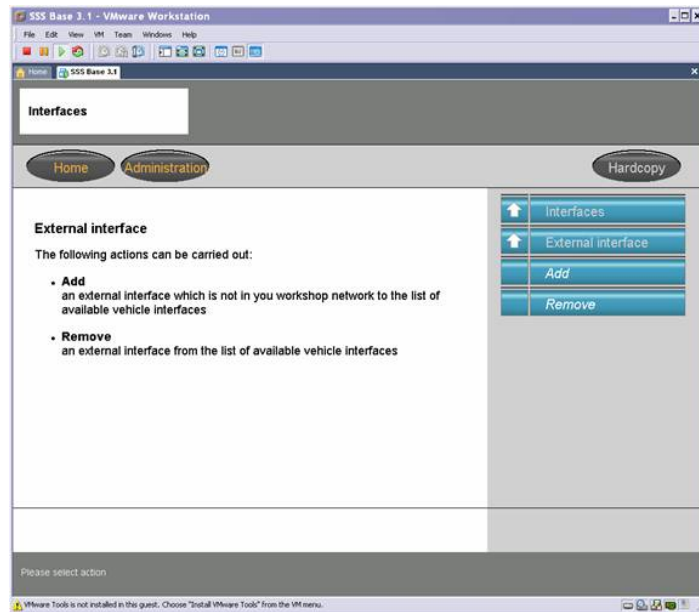
Click the Interfaces button on the left.



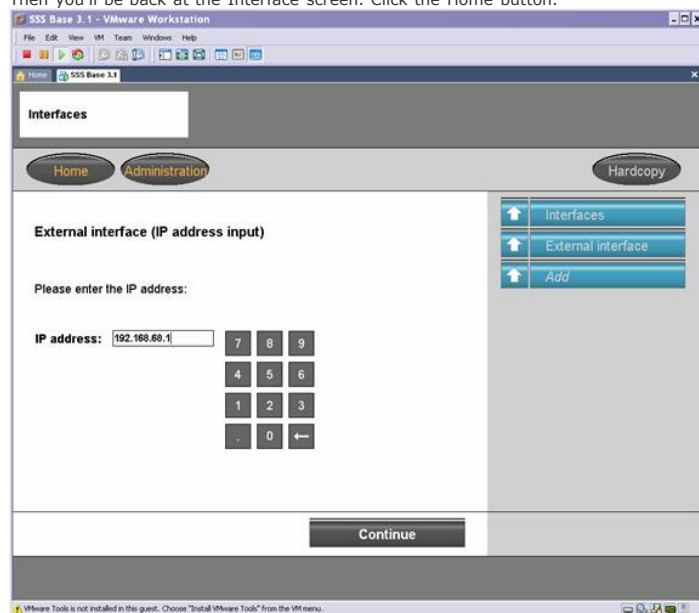
Click the External interface button on the left.



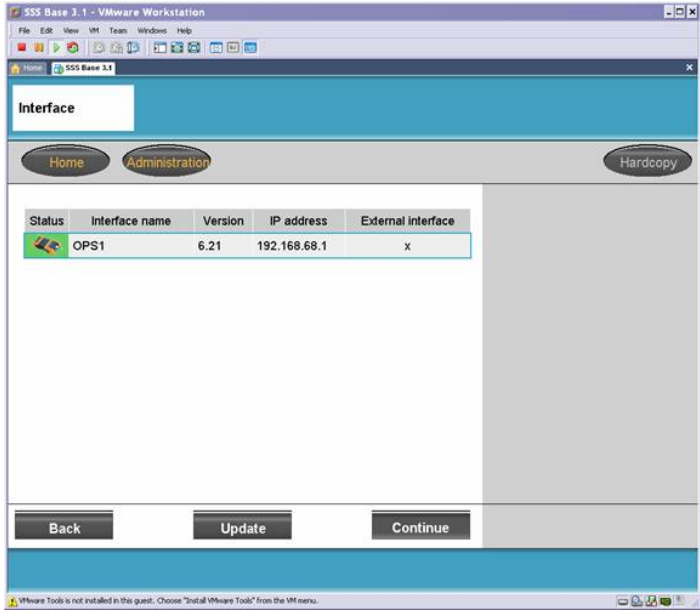
Click the Add button on the left.



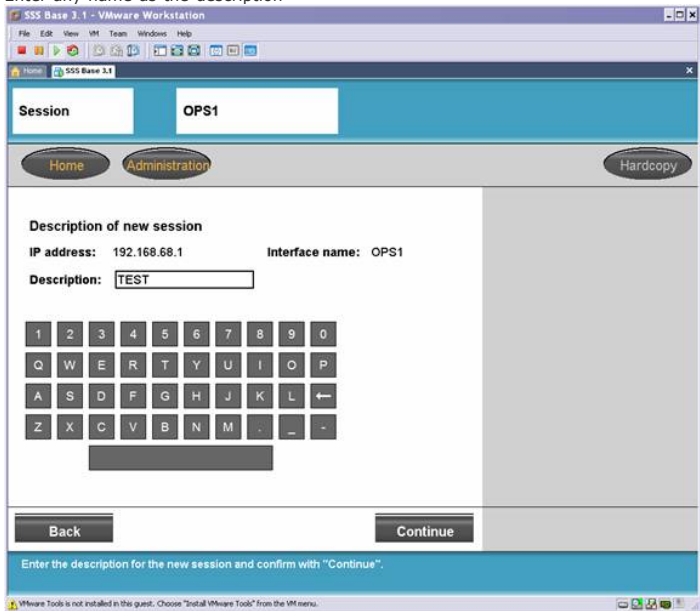
Enter 192.168.68.1 as the IP address and click Continue.  
Then you'll be back at the Interface screen. Click the Home button.



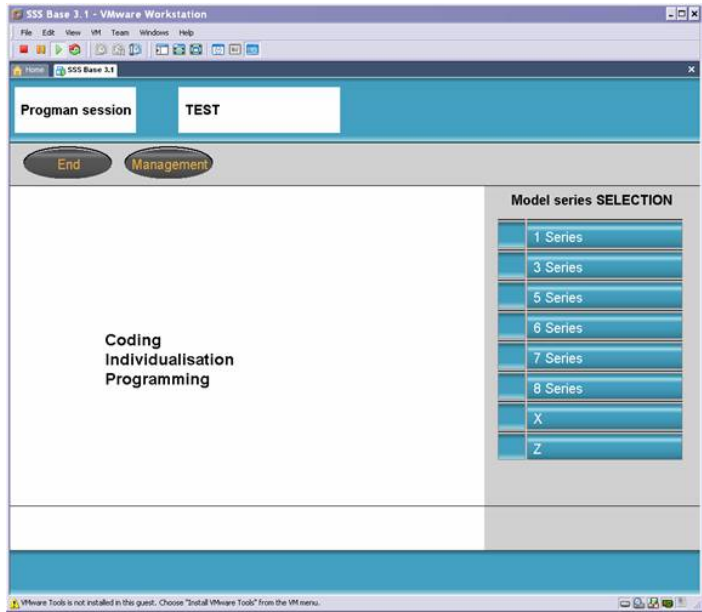
Now let's get the cable to communicate. Connect the cable to your car as you normally would and verify that INPA can talk to the car.  
Now back in Progman, click New Session and you should see the interface. Select it and press Continue.



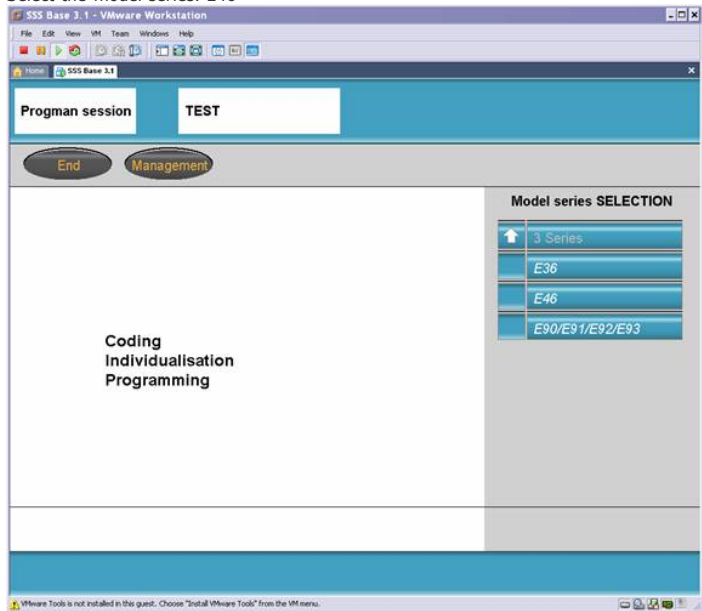
Enter any name as the description



Select your car. 3 Series

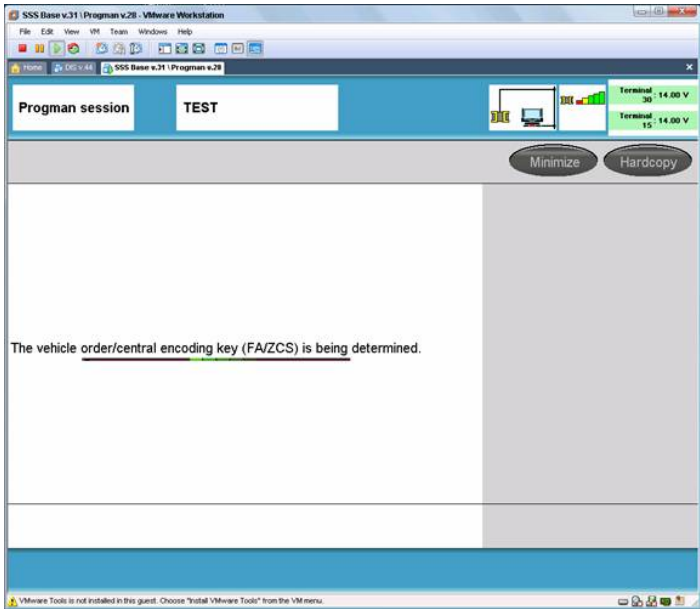


Select the model series. E46

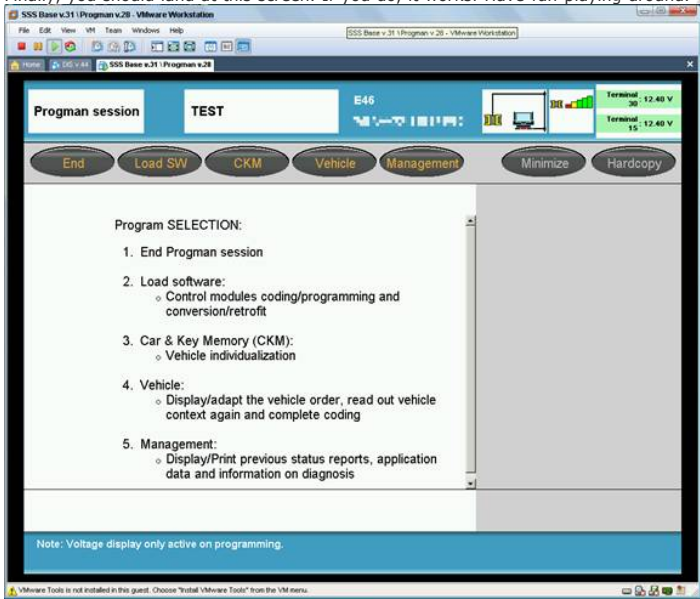


Then the vehicle order will be determined. It takes a few minutes.





Finally, you should land at this screen. If you do, it works! Have fun playing around. 😊



Further tinkering around with the software is done **AT YOUR OWN RISK.**

Info taken from: <http://forums.bimmerforums.com/forum....php?t=1401774>

Last edited by spencers; 03-23-2011 at 12:37 PM.

Reply | Reply With Quote

03-22-2011 01:01 PM

#5



**danewilson77** ◊  
Moderator  
Gold Subscriber

Join Date: Dec 1969  
Location: Williamsburg, VA  
My Ride: 2/2004 330i  
Posts: 10,612

Spencer. Thanks for the wealth of information. Excellant writeup. I may even take this one someday.



Become a ZHPMafia.com Subscriber Today -- Click Me

BMW CCA # 432214

Jim Conforti Shark Injected ZHP | AFE Pro 5 R CAI | Yokohama AVID ENVigor 235/40/18's | Enkel EKM3's | KW V1 Coilovers | Cusco Strut Bar | Custom Trim | Weisslicht AE's | No Hole License Plate Bracket | Colgan Nose Mask | Thule Rack | NBS Euro Side Mirrors

Reply | Reply With Quote

03-22-2011 01:20 PM

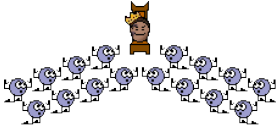
#6



Crickett  
Enforcer

Join Date: Feb 2011  
Location: San Antonio, TX  
My Ride: 10/03 330i ZHP  
Posts: 360

OMG thank you for starting this!



I fully plan to do this as soon as I get a cable; I was dreading the amount of searching & forum reading I was going to have to do to get it all working.



'04 ///ZHP sedan 6MT

Reply | Reply With Quote

03-22-2011 02:01 PM

#7



Marcus-SanDiego  
ZHPMafia.com Founder

Join Date: Dec 1969  
Location: San Diego, CA  
Posts: 10,806

Great work, Spencer. Tremendous.



Join the ZHP Mafia Special Interest Group Today

Reply | Reply With Quote

03-22-2011 10:21 PM

#8

MasterC17

Enforcer

Join Date: Jan 2011

Location: Massachusetts

My Ride: 2005 330i ZHP

Posts: 338

Thank you Spencer, I fiddled around with it a couple weeks ago but failed to get it completely working - hopefully by following these instructions I can get it to work right!



My Project Thread

Register Your ZHP | CoolantSnitch

2005 ZHP 6MT Mods: AFE Intake, Carbon Fiber Hood w/ M3 Bulge, Meyle HD FCAB's, Zionsville T-Stat @ 88°C, Stewart WP, BMW Perf. Rotors F+R, Oil Temp & Press. Gauges, Alcantara Wheel w/ CF Trim, Alum. Pedals + E-Brake, Black Kidney's, Aux Input, Beltronics RX-75 Pro Radar Detector, Beisan Seals + Rattle Kit, Armrest Delete, Schroth Harness, StopTech Pads, SSR Comp-H's

Reply

Reply With Quote

03-23-2011 12:51 PM

#9

az3579

Big Earner

Join Date: Dec 1969

Location: Bridgeport, CT

Posts: 2,975

Wow. This is exactly what I was going to do and didn't have enough time to complete.  
Thanks for saving me allllll that time writing it up and trying to get it to work... will give it a go when I come back from vaca!


Botond Pal

2005 330i ZHP / 6MT

Connecticut Valley Chapter

Patroon Chapter


Imolarot / Alcantara




Wobbie (ZHP) - 2005 BMW 330i

102 fuel-ups

driven by az3579 - Gas L6 Sedan





26.6

Avg MPG

Remember, it's not the car you drive, it's how you drive it.

Reply

Reply With Quote

03-23-2011 06:41 PM

#10

MsRN

Enforcer

Join Date: Dec 1969

Location: South Central Wisconsin

My Ride: 2005 330i ZHP

Posts: 148

Wow, Spencer! Once I have taxes finished and archived, I'm definitely going to try this on my Windows partition! Exciting!

Reply

Reply With Quote

+ Reply to Thread

Page 1 of 10123...Last

Quick NavigationDIYTop

Quick Reply

B

I

U

A

http://www.zhpmafia.com/forums/showthread.php?1808-How-to-set-up-a-BMW-Diagnostic-Computer

Page 59 of 61

☒ Show your signature

Post Quick Reply

Go Advanced

[« Previous Thread](#) | [Next Thread »](#)

Similar Threads

<b>WTB: laptop computer</b> By Mtnman in forum Miscellaneous (no vehicle-related items)	Replies: 5 Last Post: 07-12-2011, 01:12 AM
<b>WTB: MKIV nav computer.</b> By postitpad in forum ZHP-Related Parts & Accessories (no vehicle sales)	Replies: 0 Last Post: 06-03-2011, 01:43 PM
<b>How fast is your computer?</b> By Dotpage in forum General Off Topic	Replies: 103 Last Post: 04-12-2011, 09:53 PM
<b>Computer help needed...</b> By danewilson77 in forum General Off Topic	Replies: 47 Last Post: 12-16-2010, 09:55 AM
<b>Bavarian Technic BT Cable OBDII Diagnostic Tool</b> By Tampa330i in forum Maintenance	Replies: 7 Last Post: 12-12-2010, 08:37 PM

Tags for this Thread

None

View Tag Cloud

Add / Edit Tags

Posting Permissions

You may post new threads

BB code is On

You may post replies

Smilies are On

You may post attachments

[IMG] code is On

You may edit your posts

HTML code is Off

Forum Rules

Contact Us

E46 BMW 330 ZHP Forum

330i BMW ZHP Performance Package

Archive

Privacy Statement

Top

All times are GMT -4. The time now is 09:56 PM.

Powered by vBulletin™ Version 4.0.7  
Copyright © 2011 vBulletin Solutions, Inc. All rights reserved.



© 2010-2011 ZHPMafia.com - BMW E46 330 ZHP Forum -- 330i ZHP Performance Package  
ZHPMafia.com™ and BMWMafia.com™ logos and trademarks are the property of the sites' owner. The ZHPMafia.com forum, meanwhile, is not affiliated with BMW AG, BMW NA, or BMW USA.

