

# GENERAL INFORMATION

## INFORMATION ABOUT THE PRODUCT

The PedalBox changes the characteristics of the throttle pedal. Vehicles are designed for the "average" driver and to suit all conditions. By altering the throttle control software the PedalBox can optimize the throttle response and remove the built-in lag and delays.

## OBJECTIVE OF THIS MANUAL

This manual is a brief introduction to the functions and benefits of the PedalBox, to teach you everything you need to know to enjoy the PedalBox on your own vehicle! Please read and understand this manual completely before attempting installation. **We recommend the installation by in a workshop.**

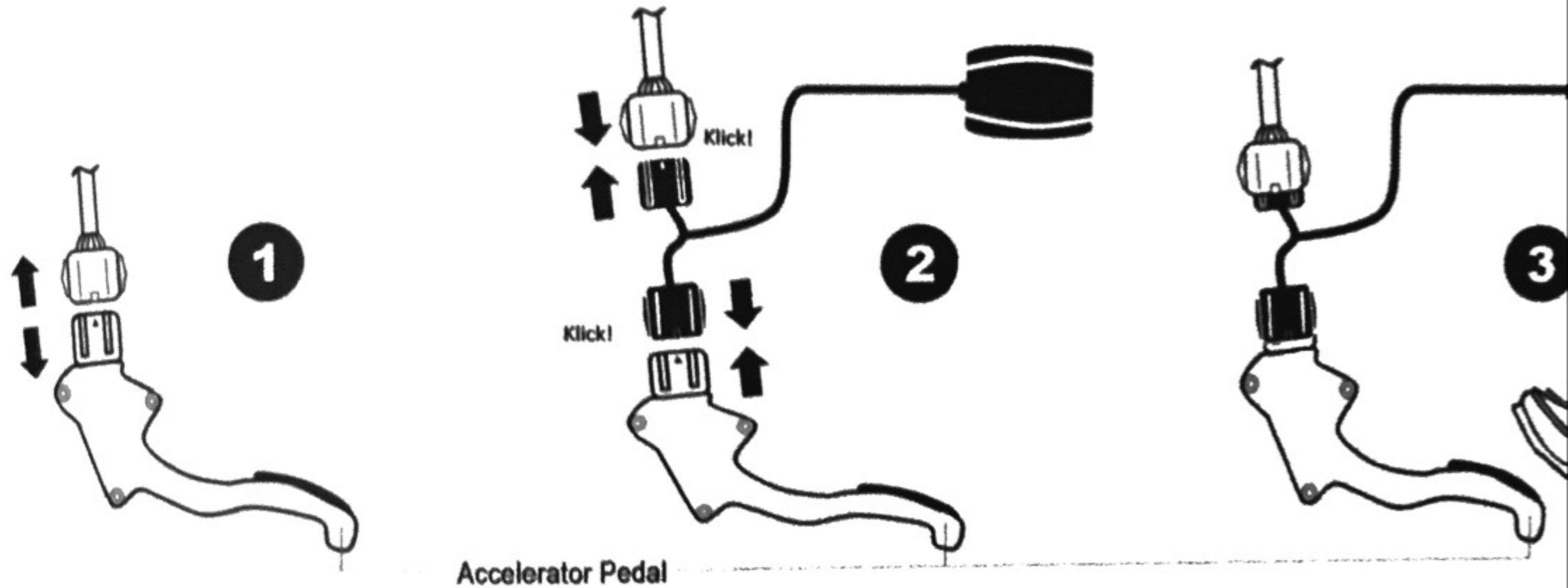
The PedalBox has been carefully designed and rigorously tested. By following the instructions and advice in this manual you will avoid incorrect fitment and ensure maximum enjoyment without running the risk of voiding the guarantee. **Note: Use the PedalBox only for the defined vehicle.**

**Never install or remove the PedalBox system with the key in the ignition or the ignition system active. Always switch off the ignition and wait 5 minutes for all electrical systems to power down and fully discharge.**

On most vehicles the connection for the PedalBox is close to the accelerator pedal or the steering column. You must ensure that the PedalBox and the associated wiring loom do not interfere with the operation of the pedal or the steering and are secured at all times. Do not modify the PedalBox or wiring loom in anyway. Any modifications will result in voiding of the guarantee.

**! N.B. Ensure that the harness is secure and does not interfere with the safe operation of the vehicle !**

# INSTALLATION



- (1) Disconnect the accelerator or to the accelerator pedal sensor.
- (2) Connect the plug of the pedal box to the two original connectors.  
Fix the PedalBox with the Velcro-Pads.
- (3) The vehicle is now ready to drive.

**! Note: The harness may in no case affect the movement of the accelerator pedal !**

# PROGRAM & SETTINGS

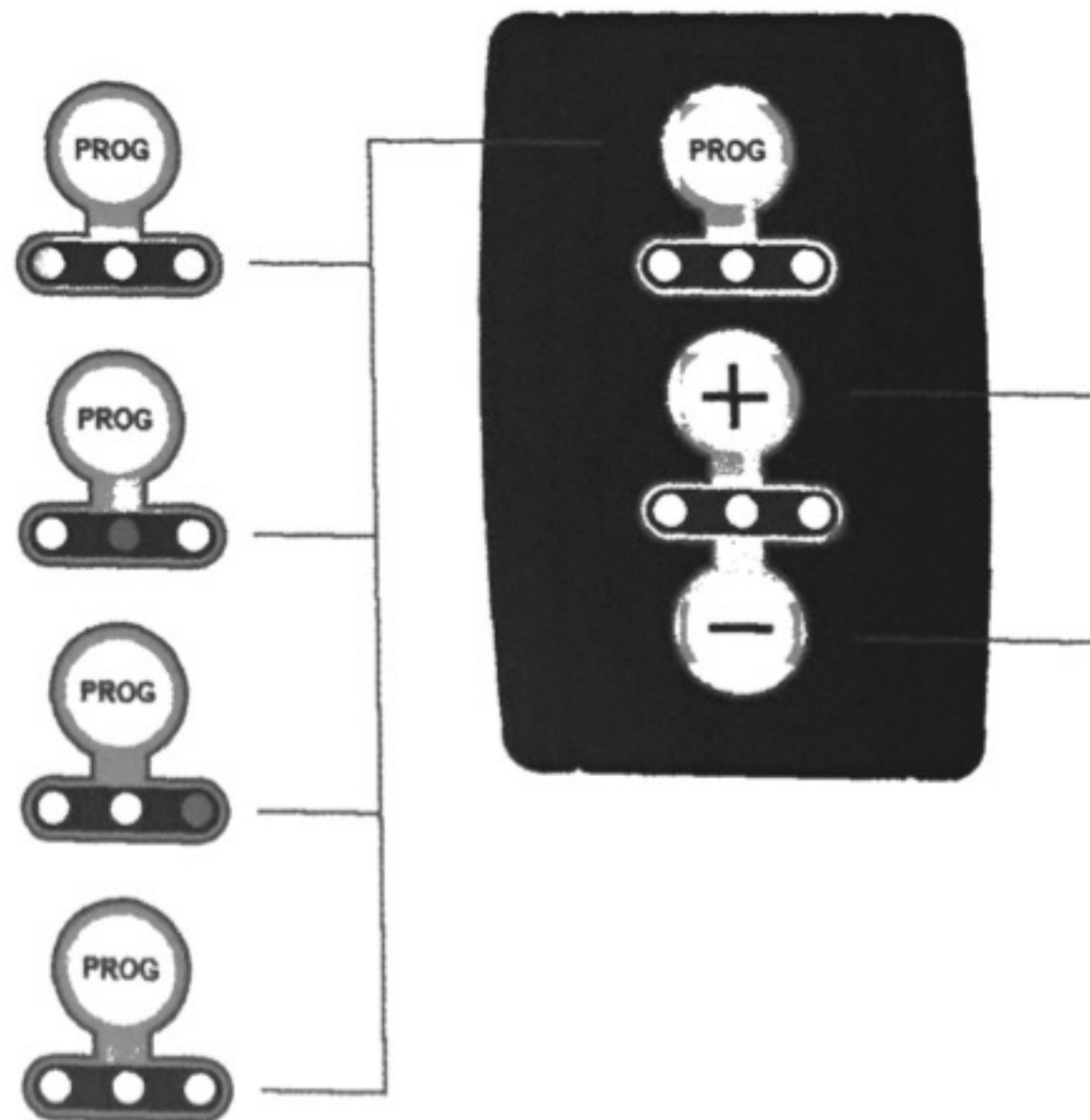
Press any button to start. The PedalBox will revert to the last setting used. With the "PROG"-Button you can choose between four preset programs. Hold button "PROG" for three seconds, the Pedal Box will be deactivated.

**SPORT** increases the throttle response up to 16 percent for an ambitious driving.

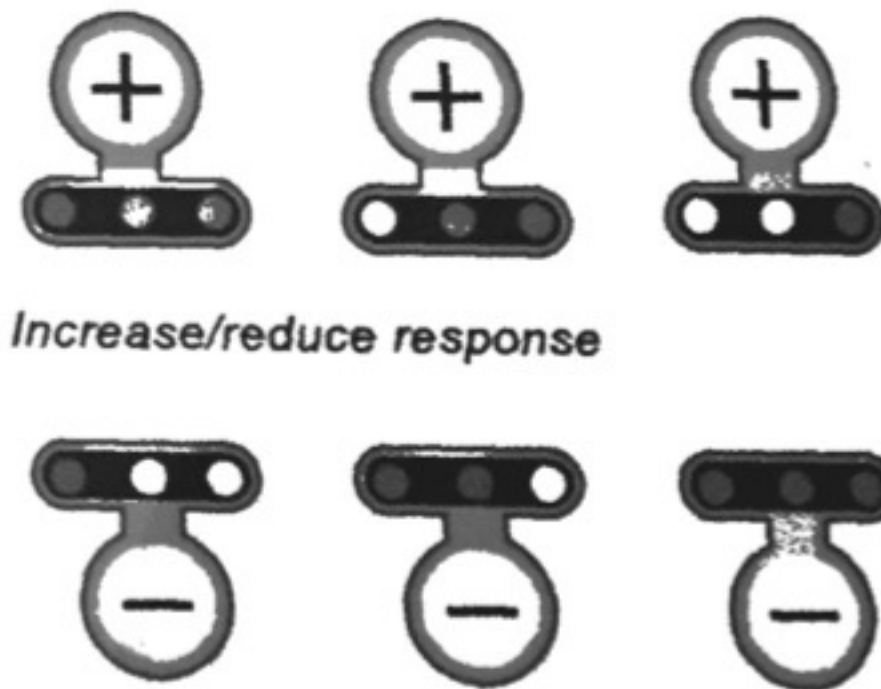
**SPORT PLUS** ensures a quick start, rapid acceleration or sovereign overtaking.

**CITY** improves the torque in low speed range - ideal for city traffic.

On slippery road surfaces, due by ice, snow or heavy rain, turn **OFF**.



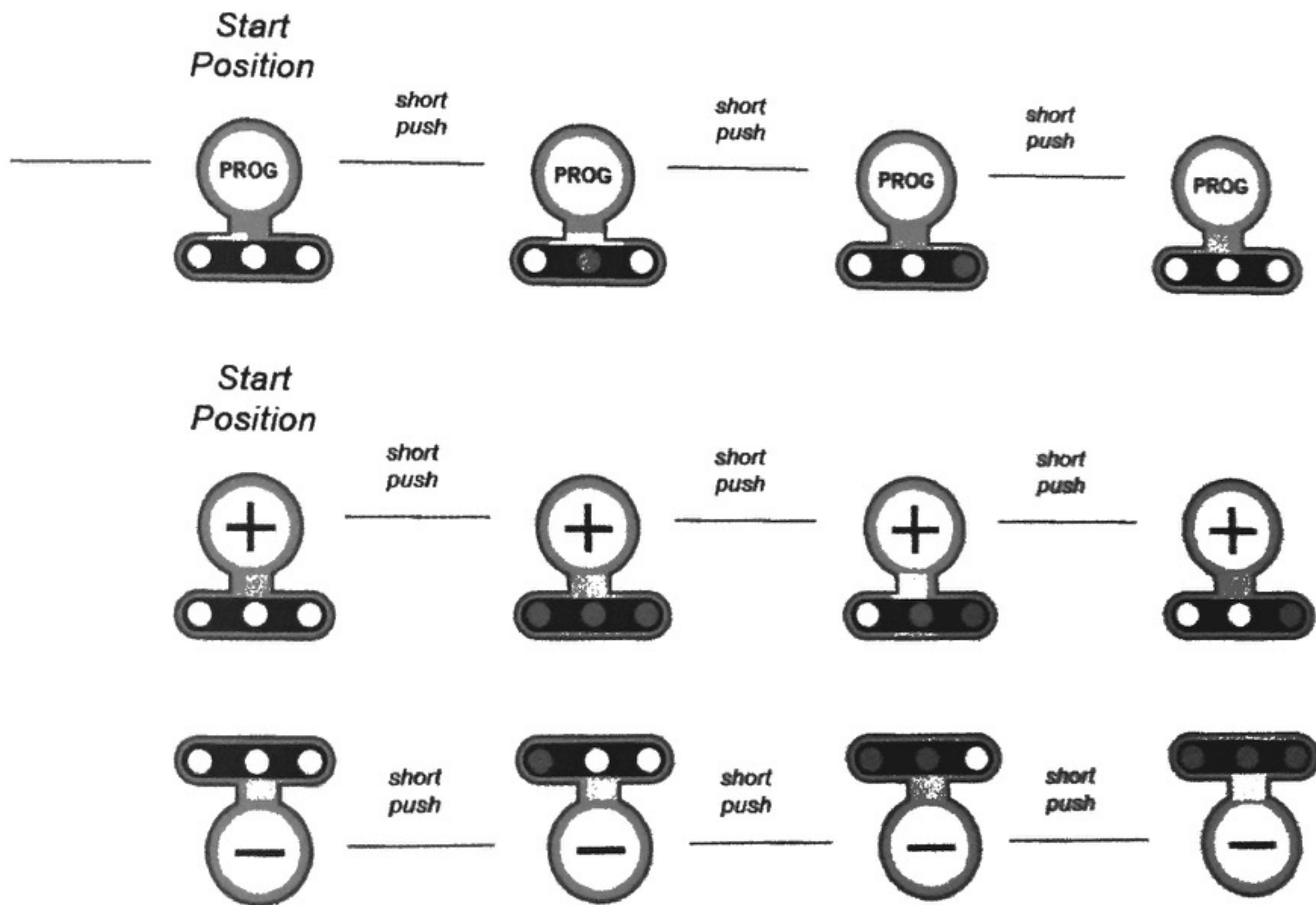
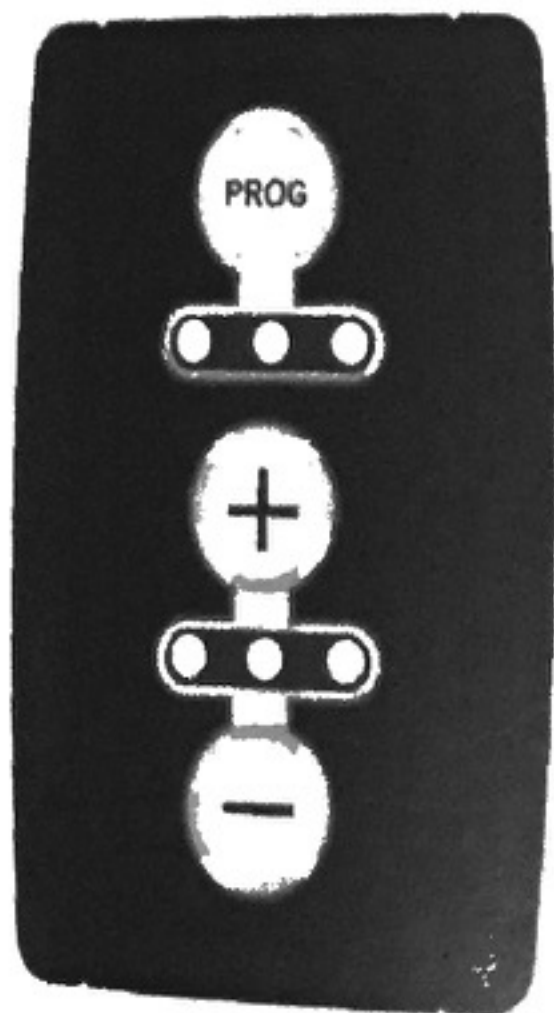
**INDIVIDUALIZATION** You can increase or reduce the response of the accelerator pedal for your specific needs in three steps.



**! Do not change programme's whilst accelerating !**

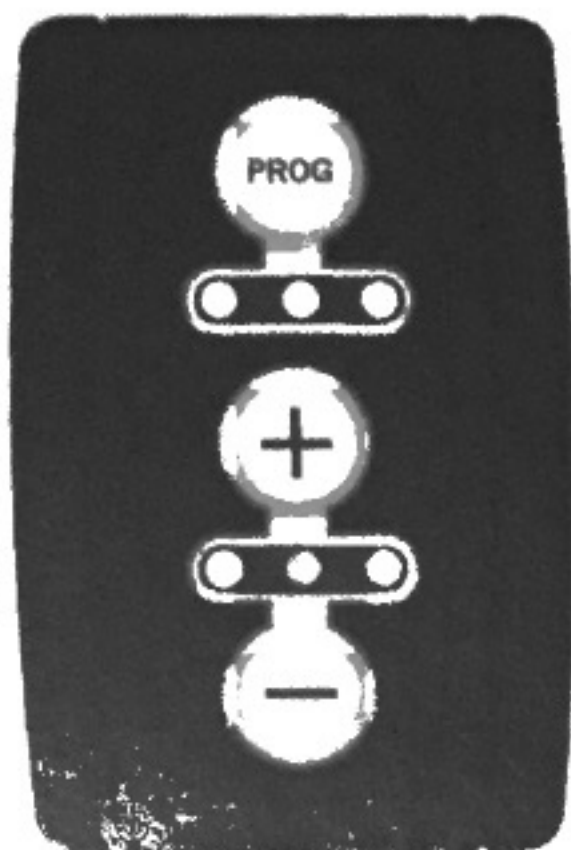
# MAKING ADJUSTMENTS

Press "PROG" shortly to switch between four preset settings. Press [+] to increase or [-] to reduce the setting.



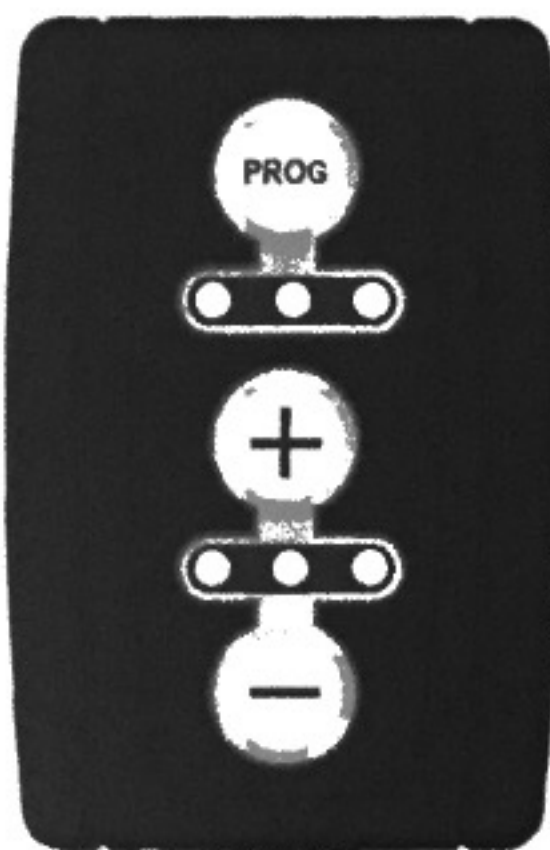
# SAVING SETTINGS

Press and hold "PROG" to switch off the PedalBox. Your last setting are saved automatically.  
Press "any Button" to reactivate the PedalBox with the last setting.



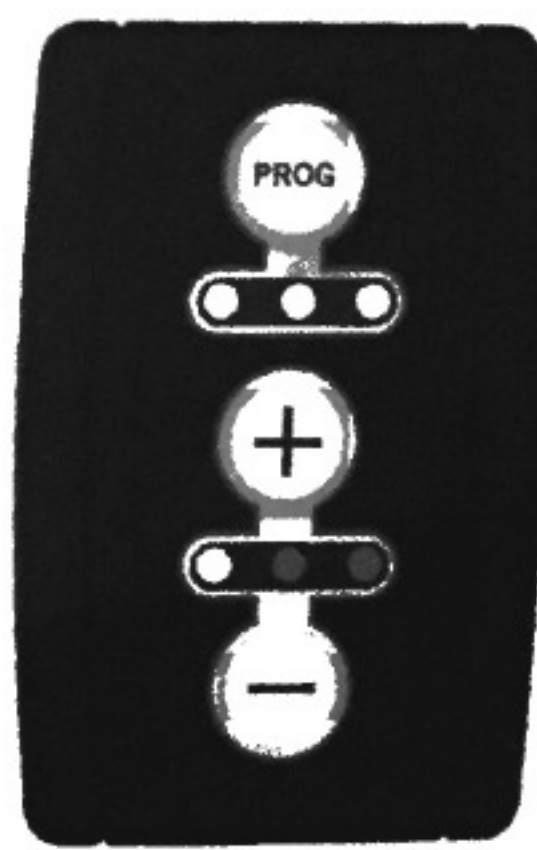
*long  
push*

*PedalBox is  
deactivated  
and settings  
are saved*



*press any  
button*

*PedalBox is  
reactivated  
and starts with  
the last settings*



*(Example Program "Sport Plus" with Adjustment)*



# NOTES ON CHANGING THE PROGRAMS

- Do not change any program settings whilst accelerating
- The PedalBox is programmed for your specific vehicle and all the settings can be used.
- It is possible when using the PedalBox on its most extreme settings that certain vehicles may display an Engine Management Light (EML) or cause Limited Power (LIMP) Mode.
- If this occurs, turn the PedalBox to an alternate setting. Switch off the ignition. Restart the car. EML or LIMP should disappear after restarting the vehicle. Certain vehicles require five or ten non-fault ignition starts.
- If the EML or LIMP do not disappear then a stored error code may need clearing by a technician.

**If you have any queries please contact your Sales Representative.**

# ERROR DESCRIPTIONS

The LED does not light up.

The car doesn't run smoothly.

The EML light is shown or the vehicle goes into LIMP mode.

Slight acceleration after lifting-off the pedal.

There is no noticeable increase in performance.

How do I return to standard throttle performance?

# PROBLEM SOLUTION

Check all connected components? Is the PedalBox switched  
Turn on ignition or start the car, problem solved?  
Non of the above: System is defective, return for warranty.

Check all connected components.  
Are the connectors in the right position?  
Are the LED's lit?  
Have you changed the program?

Reduce the settings using the "Minus"-Button.  
Try an alternate programme.  
Contact costumer support.

Reduce or change the programme.

Increase the setting using the "Plus"-Button.  
Try an alternate programme.

Set the PedalBox to setting "OFF".  
Disconnect the PedalBox in a reverse of the fitting  
instructions detailed earlier in this guide.